

Care for all that is you



Experience health care designed with you in mind

You deserve high-quality care for your total health, whatever you need – from routine checkups to complex treatments to mental wellness support.

No matter what your priority is, ours is providing excellent care – for the you who's feeling great, the you who needs support, and every you in between.



Discover how we can help you stay healthy and doing what you love at kp.org/learnthebasics.



Go where you feel like your best self

Care at Kaiser Permanente feels easier and faster, with the help of connected caregivers, more ways to get care, and support for a healthy mind, body, and spirit. Welcome to care for all that is you.

Important open enrollment dates for 2025

- The open enrollment period for 2025 coverage runs from **November 1, 2024**, through **January 15, 2025**.
- You can change or apply for coverage through Kaiser Foundation Health Plan of the Northwest, or we can help you apply through the Oregon Health Insurance Marketplace.
- For coverage that starts on **January 1, 2025**, we must receive your Application for health coverage no later than **December 15, 2024**.

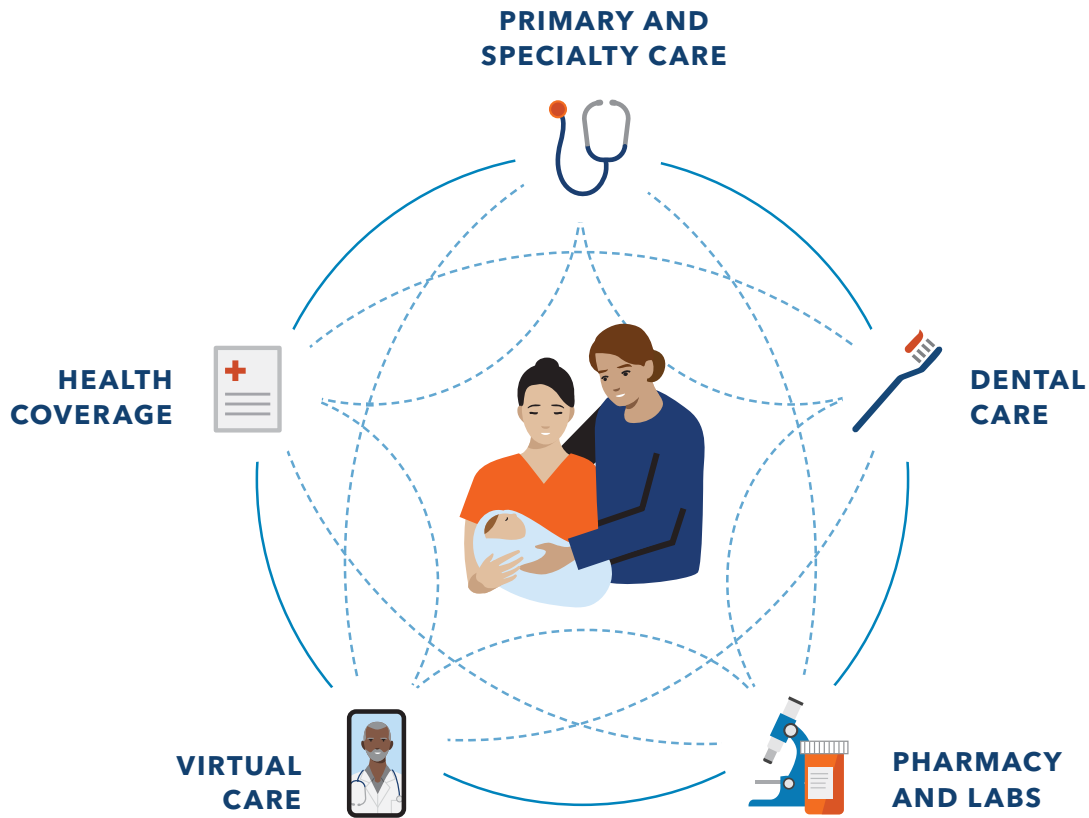
Enrolling during a special enrollment period

- Are you getting married, moving, or losing your health coverage? You can also enroll or change your coverage at other times throughout the year if you have a qualifying life event.
- Visit kp.org/specialenrollment for a list of qualifying life events and instructions.

Want to talk? We're here to help.

A Kaiser Permanente enrollment specialist can answer your questions – like where to get care or what healthy extras are included. Call **1-800-494-5314 (TTY 711)**.





A different kind of care

Your health care should make your life easier – with doctors, hospitals, and health plan benefits that are all connected and focused on providing you with exceptional care.

With Kaiser Permanente, you get

Personalized care from high-quality specialists

24/7 access to care wherever you are

Predictable costs and less paperwork

Members stay with Kaiser Permanente nearly 3 times as long as other health plans.¹

Care that's **personalized**

For the you who deserves to be seen and heard

You need a doctor who understands you. Someone who'll learn your lifestyle, health risks, and goals. At Kaiser Permanente, you typically don't have to repeat yourself every time you visit the doctor. Your care team has access to your entire Kaiser Permanente medical history through your electronic health record, so they know you and your story.

You can also change your doctor anytime and choose from many clinicians who speak more than one language, so it's easy to find the perfect match for you.

“ From seeing the doctor to getting lab work, I knew exactly where to go and the flow was seamless. ”

– Kaiser Permanente member

We guide you through every step of your care



Your Kaiser Permanente health history lives in your electronic health record.



Your care team helps guide you through appointments and referrals.



Your health record is available to you and your care team 24/7.



Your care team lets you know when to schedule checkups and tests.

Care that's world class

For the you who expects high quality

No matter your needs – mental health, maternity, cancer care, heart health, and beyond – you have access to highly skilled doctors, cutting-edge technology, and advanced evidence-based care.



Explore high-quality care options for every health need at buykp.org.

We're a national leader in outcomes

We are one of the national leaders in outcomes for conditions like cancer and heart disease, and we're among the top-rated health plans in every state we serve. ^{2,3,4,5,6}



Kaiser Permanente members are

33% more likely to **survive heart disease**⁵

52% more likely to **survive colorectal cancer**⁶

20% **less likely to die early** of cancer⁵

Recognized excellence in stroke and heart disease care⁷

The American Heart Association and American Stroke Association's Get With The Guidelines[®] program has recognized **38 of our medical centers** for commitment to excellence in the treatment of stroke or heart disease.

Sunnyside Medical Center and Westside Medical Center received the American Heart Association's Get With The Guidelines[®] Stroke Gold Plus Quality Achievement award, given to hospitals recognized for high-quality stroke care.

Care that's convenient

For the you with a busy schedule

Visit kp.org or use our app to make a routine same-day or next-day appointment, or talk to a clinician 24/7 by phone or video.⁸ No matter how you connect, you'll always speak with a medical professional who can see your Kaiser Permanente health history and pick up where you left off.



More than half of members avoided a trip to the ER or urgent care by meeting a clinician for a video visit.⁹

Your health at your fingertips

- Get 24/7 virtual care.
- Email your care team.
- View most lab results and doctor's notes.
- Refill most prescriptions.
- Check in for appointments.
- Pay bills and view statements.

Do more in one visit

Many of our facilities have pharmacies and labs in the same building, so you can see your doctor, get your tests, and pick up your prescriptions all in one stop.

Get care now

Choose from convenient options, like 24/7 phone and video or an e-visit, and find the care you need, when and where you need it.¹⁰ Visit kp.org/getcare.

Sunnyside Medical Center is ranked a Best Regional Hospital and high performing in 12 specialty areas, including lung and colon cancer surgery, heart bypass surgery, and stroke care for 2024 by U.S. News & World Report.¹¹

Care you can count on

For the you who wants dependable service

You should always have the right care – when and where you need it. Choose the Kaiser Permanente doctors and locations that work best for you, and know your care team is connected to a national network of specialists and services.

At Kaiser Permanente, most members say they get primary care appointments as soon as they expect – or sooner.¹²

You can get timely, convenient service with:

- ✓ More primary care appointments
- ✓ Quick lab results
- ✓ 24/7 virtual care
- ✓ A large clinician network



See how to get care that meets you where you are at kp.org/connectedtocare.



Mail-order pharmacy

- Easy refills online, in person, or over the phone
- Most are same-day pickup
- Most prescriptions delivered to your front door¹³
- Same-day or next-day home delivery available for an additional fee¹³



Care while traveling

- Help with vaccinations, prescription refills, and more
- Urgent and emergency care worldwide – not just at Kaiser Permanente facilities

Affiliated providers in Lane County

Kaiser Permanente health plans include access to affiliated providers for primary and specialty care. Members can now access all PeaceHealth locations for primary care, plus more than 700 affiliated specialty care partners throughout Lane County.¹⁴

Care that's all-encompassing

For the you who wants to explore all your health options

Kaiser Permanente members can get help with depression, anxiety, addiction, and mental or emotional health – without a referral for mental health care within Kaiser Permanente. Share your concerns with anyone on your care team at any time, and they can connect you to the support you need.

- Individual or group therapy
- Health classes¹⁵
- Medication
- Self-care resources
- Mental wellness apps¹⁶

Not sure where to start? Talk to your personal doctor about your concerns or call us to talk with our mental health team. Visit kp.org/mentalhealth for more information.



Resources for your everyday wellness

Take advantage of classes, services, and programs to help you achieve your health goals.¹⁷

- Acupuncture, massage therapy, and chiropractic care
- Healthy lifestyle programs¹⁷
- Wellness coaching¹⁷



Enjoy special deals

on fitness programs, gym memberships, and online resources.

CHP Active and Healthy

Enjoy discounted online tools, classes, programs, and activities that can help keep you happy and healthy. Visit chpactiveandhealthy.com.

Choosing your health plan

We offer a variety of plans to help fit your needs and budget. All of them offer the same quality care, but the way they split the costs is different.

Copay plans – gold

Copay plans are the simplest. You know in advance how much you'll pay for care like doctor visits and prescriptions. This amount is called your copay. Your monthly premium is higher, but you'll pay much less when you get care.

Deductible plans – gold, silver, and bronze

With a deductible plan, your monthly premium is lower, but you'll need to pay the full charges for most covered services until you reach a set amount, known as your deductible. Then you'll start paying less – a copay or coinsurance. Depending on your plan, some services, like office visits or prescriptions, may be available at a copay or coinsurance before you reach your deductible.

HSA-qualified high deductible health plans – silver and bronze

HSA-qualified deductible plans are deductible plans that give you the option of setting up a health savings account (HSA) to pay for eligible health care costs, including copays, coinsurance, and deductible payments. You won't pay federal taxes on the money in this account.

You can use your HSA anytime to pay for care, including some services that may not be covered by your plan, such as eyeglasses, adult dental, or chiropractic services.¹⁸ If you have money left in your HSA at the end of the year, it will roll over for you to use the next year.

The Kaiser Permanente dental difference

For 50 years, Kaiser Permanente Northwest has been helping our members thrive with healthy smiles and dental care that connects seamlessly to their medical plans. Your oral health – the health of your teeth and gums – affects your overall health, medical costs, and quality of life. That’s why prevention is at the core of our philosophy and why our medical and dental teams work together to help protect the total health of our members.

Taking care of your dental health can help decrease the risk of serious medical issues, such as:

- Heart disease
- Diabetes
- Arthritis
- Certain types of cancers
- Pregnancy and birth complications
- And more

Shared health records mean our dentists see when members are due for medical screenings and can even help schedule their appointments right away, which can lead to early detection if there is a problem. Plus, members with both Kaiser Permanente medical and dental plans can save a trip by taking care of minor medical needs, like flu shots or vaccinations, during their dental appointment.¹⁹

Choice

Our Oregon and Southwest Washington dental group has more than 160 general and pediatric dentists, orthodontists, periodontists, oral surgeons, endodontists, and prosthodontists, who all work together for your care.

Convenience

We have 21 dental offices in the Portland metro area, Southwest Washington, Longview, Salem, and Eugene, so there’s sure to be one near you. You can also save time by getting answers or advice for nonurgent dental questions virtually, by phone or email.

Quality

Our dental professionals exceed national standards. Since 1990, we’ve received accreditation from the Accreditation Association for Ambulatory Health Care (AAAHC). Right now, we’re the only dental practice in the Pacific Northwest with AAAHC accreditation.²⁰

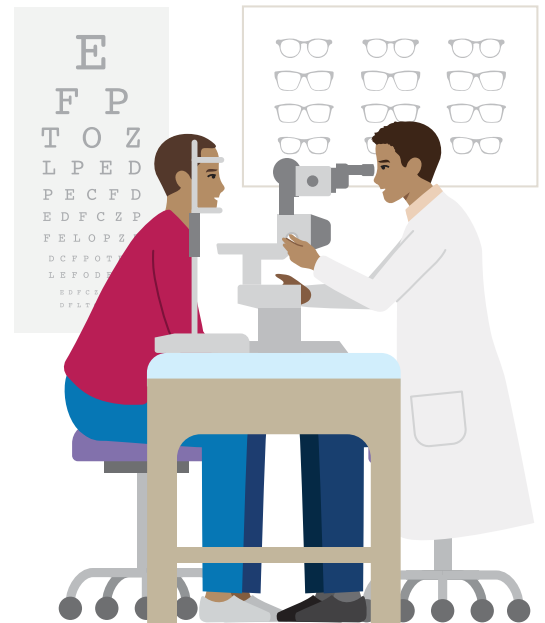
Visit kp.org/dental to learn more.

Vision Essentials

We offer eye care services to help keep your world in focus. Plus, when you're a Kaiser Foundation Health Plan of the Northwest member, your eye health information becomes part of your overall medical record, giving your care team a complete picture of your health.

Adult vision exams are included in our Gold plans (except Oregon Standard), KP OR Silver 750, KP OR Silver 3000 X, and the KP OR Silver 3000 plan. CSR plans for plans listed above have adult vision exams included. All plans include medically necessary eye exams, pediatric vision exams for children 18 and younger, as well as glasses or contact lenses for children, usually at no additional cost.²¹

For more information, including our 8 optical locations, visit kp2020.org.



Find a facility near you

Having a wide selection of health care providers in convenient locations is important. That's why we have medical facilities and dental offices in 5 areas: Southwest Washington, Salem, Longview, Eugene-Springfield, and the Portland metropolitan area.

Locate a medical provider

Just visit kp.org/newmember, select your region, and click on "Choose a personal physician" under "Getting Started." Next, choose a physician, physician's assistant, or nurse practitioner as your primary care participating provider in these departments:

- Family medicine for children and adults
- Internal medicine for members 18 and older
- Ob-gyn for female members (certified nurse-midwives also available)
- Pediatrics for members under age 18

Our medical staff directory lists both primary care and specialty care providers, and shows their education, gender, languages spoken, and more.

You can download the directory from the "Forms and Publications" section of the website. Or, to have one sent to you, contact Member Services at **1-800-813-2000** (TTY **711**) from 8 a.m. to 6 p.m., Monday through Friday (closed major holidays). For language interpretation services, call **1-800-324-8010**.

Talk to a new member specialist

Call our dedicated New Member Welcome Desk at **1-888-491-1124** (TTY **711**), Monday through Friday, 8 a.m. to 6 p.m., and talk with a specialist who can help you get the most out of your benefits quickly and

easily. They can assist you with selecting a provider, transferring medical records and prescriptions, setting appointments, and more.

Our locations

We provide quality care to more than 600,000 members in Oregon and Southwest Washington. Our service area extends from Eugene, Oregon, to Longview, Washington, and includes medical offices, Vision Essentials by Kaiser Permanente optical retail locations, urgent care clinics, and hospitals. We also have a network of affiliated providers for routine, urgent, or emergency care.

For more information on our medical facilities, visit kp.org/facilities.

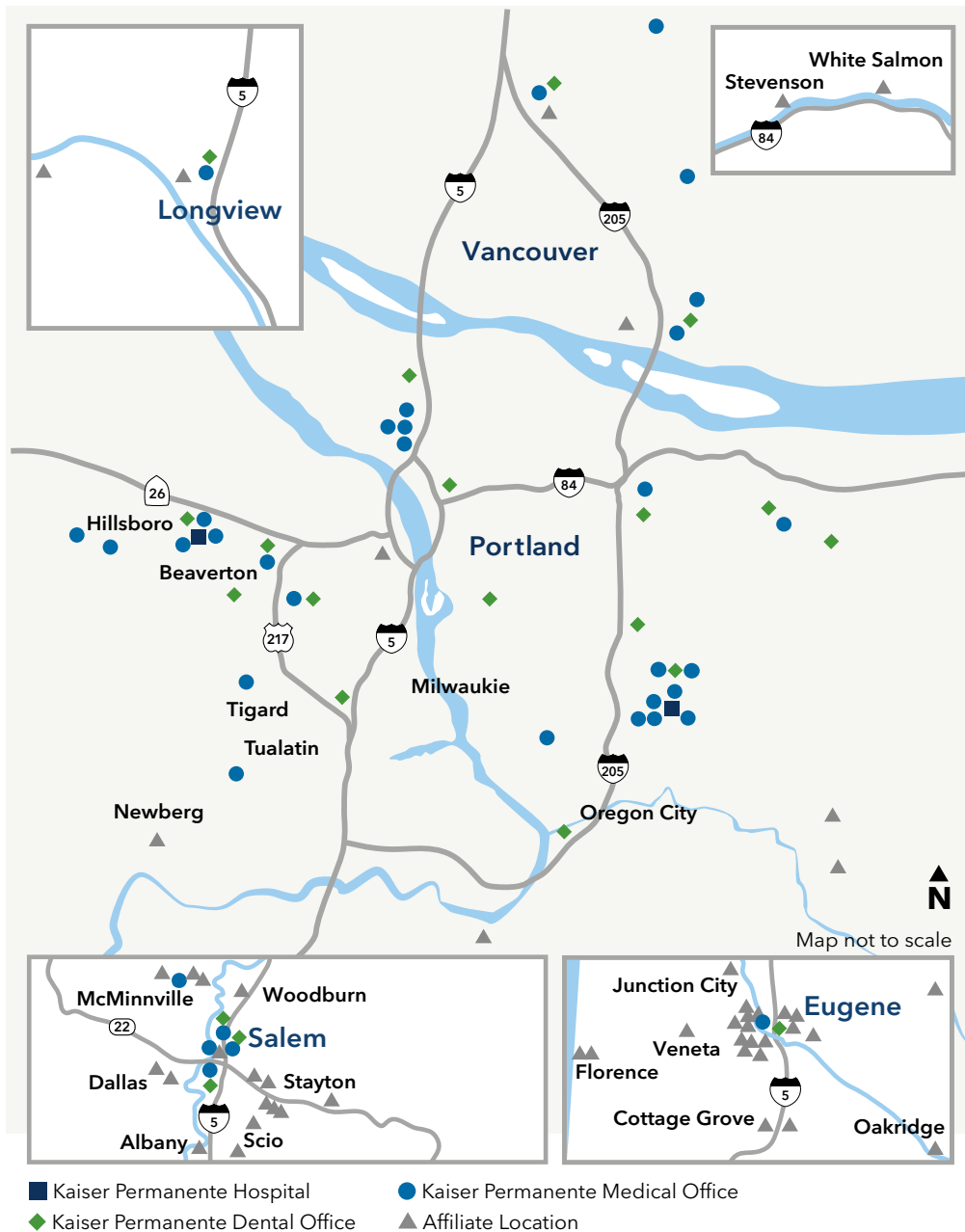
Dental care

With 21 dental offices to choose from, it's easy to find a location that's convenient for you. For more information about our dental plans and the wide range of services available, please visit kp.org/dental/nw.

WHERE TO FIND CARE

Oregon and Southwest Washington

We provide quality care to more than 600,000 members in Oregon and Southwest Washington. Our service area extends from Eugene, Oregon, to Longview, Washington, and includes medical offices, dental offices, Vision Essentials by Kaiser Permanente optical retail locations, urgent care clinics, and hospitals. We also have a network of affiliated providers for routine, urgent, or emergency care.



Get care now

Choose from convenient options, like 24/7 phone and video or an e-visit, and find the care you need, when and where you need it.*

kp.org/getcare



Facility information current as of May 2024.²²

Go to kp.org/locations to see all our current locations and to find the facility closest to you. Or call Member Services at **1-800-813-2000 (TTY 711)**.

*When appropriate and available. These features are available when you get care at Kaiser Permanente facilities. For high deductible health plan members, e-visits, phone visits, and video appointments are subject to your plan's annual deductible. If you travel out of state, phone appointments and video visits may not be available due to state laws that may prevent doctors from providing care across state lines. Laws differ by state. To have a video visit, members must be registered on kp.org and have a camera-equipped computer or mobile device. Applicable cost shares will apply for services or items ordered during an e-visit.



Complete care to help you live a fuller, healthier life

With Kaiser Permanente, our trusted care teams coordinate and personalize your care – so you can spend more time doing what you love.

Have questions about your plan options?



Visit buykp.org to get started.

Call **1-800-494-5314** (TTY 711) to talk to an enrollment specialist.

Current members with questions can call Member Services at **1-800-813-2000** (TTY 711).



1. Kaiser Permanente internal data, 2020; Hanming Fang, PhD, et al., "Trends in Disenrollment and Reenrollment Within US Commercial Health Insurance Plans, 2006-2018," *JAMA Network*, February 24, 2022. 2. Kaiser Permanente 2023 HEDIS® scores. Benchmarks provided by the National Committee for Quality Assurance (NCQA) Quality Compass® and represent all lines of business. Kaiser Permanente combined region scores were provided by the Kaiser Permanente Department of Care and Service Quality. The source for data contained in this publication is Quality Compass 2023 and is used with the permission of NCQA. Quality Compass 2023 includes certain CAHPS data. Any data display, analysis, interpretation, or conclusion based on these data is solely that of the authors, and NCQA specifically disclaims responsibility for any such display, analysis, interpretation, or conclusion. Quality Compass® and HEDIS® are registered trademarks of NCQA. CAHPS® is a registered trademark of the Agency for Healthcare Research and Quality. 3. 2022 Annual Report, Kaiser Permanente, [about.kaiserpermanente.org/who-we-are/annual-reports/2022-annual-report](https://www.kaiserpermanente.org/who-we-are/annual-reports/2022-annual-report). 4. NCQA's Private Health Insurance Plan Ratings 2023-2024, National Committee for Quality Assurance, 2023: Kaiser Foundation Health Plan of Colorado – HMO (rated 4 out of 5); Kaiser Foundation Health Plan of Georgia, Inc. – HMO (rated 4 out of 5); Kaiser Foundation Health Plan, Inc., of Hawaii – HMO (rated 4 out of 5); Kaiser Foundation Health Plan of the Mid-Atlantic States, Inc. – HMO (rated 5 out of 5); Kaiser Foundation Health Plan, Inc., of Northern California – HMO (rated 4.5 out of 5); Kaiser Foundation Health Plan of the Northwest – HMO (rated 4 out of 5); Kaiser Foundation Health Plan, Inc., of Southern California – HMO (rated 4.5 out of 5); Kaiser Foundation Health Plan of Washington – HMO (rated 4 out of 5). 5. Elizabeth A. McGlynn, PhD, et al., "Measuring Premature Mortality Among Kaiser Permanente Members Compared to the Community," Kaiser Permanente, July 20, 2022. 6. Theodore R. Levin, MD, et al., "Effects of Organized Colorectal Cancer Screening on Cancer Incidence and Mortality in a Large, Community-Based Population," *Gastroenterology*, November 2018. 7. American Heart Association and American Stroke Association, July 11, 2024. 8. When appropriate and available. If you travel out of state, phone appointments and video visits may not be available due to state laws that may prevent doctors from providing care across state lines. Laws differ by state. 9. Kaiser Permanente GCN Post-Visit Survey of 60,945 members, 2023. 10. When appropriate and available. These features are available when you get care at Kaiser Permanente facilities. For high deductible health plan members, e-visits, phone visits, and video appointments are subject to your plan's annual deductible. If you travel out of state, phone appointments and video visits may not be available due to state laws that may prevent doctors from providing care across state lines. Laws differ by state. To have a video visit, members must be registered on kp.org and have a camera-equipped computer or mobile device. Applicable cost shares will apply for services or items ordered during an e-visit. 11. "U.S. News Best Hospitals 2024-2025," [health.usnews.com/best-hospitals/area/or/kaiser-permanente-sunnyside-medical-center-6920045](https://www.health.usnews.com/best-hospitals/area/or/kaiser-permanente-sunnyside-medical-center-6920045). Information valid as of July 2024. For most recent rankings, visit [health.usnews.com](https://www.health.usnews.com). 12. Kaiser Permanente National Market Research, November 2023. 13. Not all prescriptions can be mailed, restrictions may apply. Please check with your local pharmacy. Same-day and next-day prescription delivery services may be available for an additional fee. These services are not covered under your health plan benefits and may be limited to specific prescription drugs, pharmacies, and areas. Order cutoff times and delivery days may vary by pharmacy location. Kaiser Permanente is not responsible for delivery delays by mail carriers. Kaiser Permanente may discontinue same-day and next-day prescription delivery services at any time without notice and other restrictions may apply. Medi-Cal and Medicaid beneficiaries should ask their pharmacy for more information about prescription delivery. 14. Some specialty care services are accessed through referral and prior authorization. Go to kp.org/doctors to verify network participation. 15. Some classes may require a fee. 16. The apps and services described above are not covered under your health plan benefits, are not a Medicare-covered benefit, and are not subject to the terms set forth in your *Evidence of Coverage* or other plan documents. The apps and services may be discontinued at any time. 17. The services described above are not covered under your health plan benefits and are not subject to the terms set forth in your *Evidence of Coverage* or other plan documents. These services may be discontinued at any time without notice. 18. For a complete list of services you can use your HSA to pay for, see *Publication 502, Medical and Dental Expenses*, at [irs.gov](https://www.irs.gov). 19. Medical services are available at select dental locations. You must be enrolled in a Kaiser Permanente medical plan to receive medical care. 20. Source: https://eweb.aaahc.org/eweb/dynamicpage.aspx?site=aaahc_site&webcode=find_orgs. 21. Vision hardware must be prescribed and purchased at a Kaiser Permanente Optical Center, and there is no additional charge when selected from a list of standard frames. 22. Maps and facilities are subject to change.

Nondiscrimination Notice

Kaiser Foundation Health Plan of the Northwest (Kaiser Health Plan) complies with applicable federal and state civil rights laws and does not discriminate on the basis of race, color, national origin, age, disability, sex, gender identity, or sexual orientation. Kaiser Health Plan does not exclude people or treat them differently because of race, color, national origin, age, disability, sex, gender identity, or sexual orientation. We also:

- Provide no cost aids and services to people with disabilities to communicate effectively with us, such as:
 - Qualified sign language interpreters
 - Written information in other formats, such as large print, audio, and accessible electronic formats
- Provide no cost language services to people whose primary language is not English, such as:
 - Qualified interpreters
 - Information written in other languages

If you need these services, call Member Services at **1-800-813-2000** (TTY: **711**).

If you believe that Kaiser Health Plan has failed to provide these services or discriminated in another way on the basis of race, color, national origin, age, disability, sex, gender identity, or sexual orientation, you can file a grievance with our Civil Rights Coordinator, by mail, phone, or fax. If you need help filing a grievance, our Civil Rights Coordinator is available to help you. You may contact our Civil Rights Coordinator at: Member Relations Department, Attention: Kaiser Civil Rights Coordinator, 500 NE Multnomah St. Ste 100, Portland, OR 97232-2099, Phone: **1-800-813-2000** (TTY: **711**), Fax: **1-855-347-7239**.

You can also file a civil rights complaint with the U.S. Department of Health and Human Services, Office for Civil Rights, electronically through the Office for Civil Rights Complaint portal, available at <https://ocrportal.hhs.gov/ocr/portal/lobby.jsf>, or by mail or phone at: U.S. Department of Health and Human Services, 200 Independence Avenue SW, Room 509F, HHH Building, Washington, DC 20201, Phone: 1-800-368-1019, TDD: 1-800-537-7697. Complaint forms are available at www.hhs.gov/ocr/office/file/index.html.

For Washington Members

You can also file a complaint with the Washington State Office of the Insurance Commissioner, electronically through the Office of the Insurance Commissioner Complaint portal, available at <https://www.insurance.wa.gov/file-complaint-or-check-your-complaint-status>, or by phone at 1-800-562-6900, or 360-586-0241 (TDD). Complaint forms are available at <https://fortress.wa.gov/oic/online-services/cc/pub/complaintinformation.aspx>.

Help in Your Language

ATTENTION: If you speak English, language assistance services, free of charge, are available to you. Call **1-800-813-2000** (TTY: **711**).

አማርኛ (Amharic) ማህታወሻ: የሚናገሩት ቋንቋ አማርኛ ከሆነ የትርጉም እርዳታ ድርጅቶች፣ በነጻ ሊያግዝዎት ተዘጋጅተዋል፡ ወደ ሚከተለው ቁጥር ይደውሉ **1-800-813-2000** (TTY: **711**).

العربية (Arabic) ملحوظة: إذا كنت تتحدث العربية، فإن خدمات المساعدة اللغوية تتوافر لك بالمجان. اتصل برقم **1-800-813-2000** (TTY: **711**).

中文 (Chinese) 注意: 如果您使用繁體中文，您可以免費獲得語言援助服務。請致電**1-800-813-2000** (TTY: **711**)。

فارسی (Farsi) توجه: اگر به زبان فارسی گفتگو می کنید، تسهیلات زبانی بصورت رایگان برای شما فراهم می باشد. با **1-800-813-2000** (TTY: **711**) تماس بگیرید.

Français (French) ATTENTION: Si vous parlez français, des services d'aide linguistique vous sont proposés gratuitement. Appelez le **1-800-813-2000** (TTY: **711**).

Deutsch (German) ACHTUNG: Wenn Sie Deutsch sprechen, stehen Ihnen kostenlos sprachliche Hilfsdienstleistungen zur Verfügung. Rufnummer: **1-800-813-2000** (TTY: **711**).

日本語 (Japanese) 注意事項: 日本語を話される場合、無料の言語支援をご利用いただけます。**1-800-813-2000** (TTY: **711**) まで、お電話にてご連絡ください。

ខ្មែរ (Khmer) ប្រយ័ត្ន: បើសិនជាអ្នកនិយាយភាសាខ្មែរ, សេវាជំនួយផ្នែកភាសា ដោយមិនគិតថ្លៃ គឺអាចមានសំរាប់បំរើអ្នក។ ចូរ ទូរស័ព្ទ **1-800-813-2000** (TTY: **711**)។

한국어 (Korean) 주의: 한국어를 사용하시는 경우, 언어 지원 서비스를 무료로 이용하실 수 있습니다. **1-800-813-2000** (TTY: **711**) 번으로 전화해 주십시오.

ລາວ (Laotian) ໂປດຊານ: ຖ້າວ່າ ທ່ານເວົ້າພາສາ ລາວ, ການບໍລິການຊ່ວຍເຫຼືອດ້ານພາສາ, ໂດຍບໍ່ເສັຽຄ່າ, ແມ່ນມີ ພ້ອມໃຫ້ທ່ານ. ໂທ **1-800-813-2000** (TTY: **711**).

Afaan Oromoo (Oromo) XIYEEFFANNAA: Afaan dubbattu Oroomiffa, tajaajila gargaarsa afaanii, kanfaltiidhaan ala, ni argama. Bilbilaa **1-800-813-2000** (TTY: **711**).

ਪੰਜਾਬੀ (Punjabi) ਧਿਆਨ ਦਿਓ: ਜੇ ਤੁਸੀਂ ਪੰਜਾਬੀ ਬੋਲਦੇ ਹੋ, ਤਾਂ ਭਾਸ਼ਾ ਵਿੱਚ ਸਹਾਇਤਾ ਸੇਵਾ ਤੁਹਾਡੇ ਲਈ ਮੁਫਤ ਉਪਲਬਧ ਹੈ। **1-800-813-2000** (TTY: **711**) 'ਤੇ ਕਾਲ ਕਰੋ।

Română (Romanian) ATENȚIE: Dacă vorbiți limba română, vă stau la dispoziție servicii de asistență lingvistică, gratuit. Sunați la **1-800-813-2000** (TTY: **711**).

Русский (Russian) ВНИМАНИЕ: если вы говорите на русском языке, то вам доступны бесплатные услуги перевода. Звоните **1-800-813-2000** (TTY: **711**).

Español (Spanish) ATENCIÓN: si habla español, tiene a su disposición servicios gratuitos de asistencia lingüística. Llame al **1-800-813-2000** (TTY: **711**).

Tagalog (Tagalog) PAUNAWA: Kung nagsasalita ka ng Tagalog, maaari kang gumamit ng mga serbisyo ng tulong sa wika nang walang bayad. Tumawag sa **1-800-813-2000** (TTY: **711**).

ไทย (Thai) เรียน: ถ้าคุณพูดภาษาไทย คุณสามารถใช้บริการช่วยเหลือทางภาษาได้ฟรี โทร **1-800-813-2000** (TTY: **711**).

Українська (Ukrainian) УВАГА! Якщо ви розмовляєте українською мовою, ви можете звернутися до безкоштовної служби мовної підтримки. Телефонуйте за номером **1-800-813-2000** (TTY: **711**).

Tiếng Việt (Vietnamese) CHÚ Ý: Nếu bạn nói Tiếng Việt, có các dịch vụ hỗ trợ ngôn ngữ miễn phí dành cho bạn. Gọi số **1-800-813-2000** (TTY: **711**).

In Oregon and Southwest Washington (Clark and Cowlitz counties), all plans are offered and underwritten by Kaiser Foundation Health Plan of the Northwest, 500 NE Multnomah St., Suite 100, Portland, OR 97232.