

Care for all that is you



Experience health care designed with you in mind

Care for ...

Routine checkups, complex treatments, and late-night questions

Building strength, reducing stress, and raising a family

New goals, old habits, and ongoing mental wellness

No matter what your priority is, ours is providing excellent care – for the you who's feeling great, the you who needs support, and every you in between.



Go where you feel like your best self

We can help you get to your healthy place – no matter where it is. Care at Kaiser Permanente feels easier and faster, with the help of connected caregivers, more ways to get care, and support for a healthy mind, body, and spirit. Welcome to care for all that is you.

Important open enrollment dates for 2024

- The open enrollment period for 2024 coverage runs from **November 1, 2023**, through **January 15, 2024**.
- You can change or apply for coverage through Kaiser Foundation Health Plan of the Northwest, or we can help you apply through Washington Healthplanfinder.
- For coverage that starts on **January 1, 2024**, we must receive your Application for health coverage no later than **December 15, 2023**.

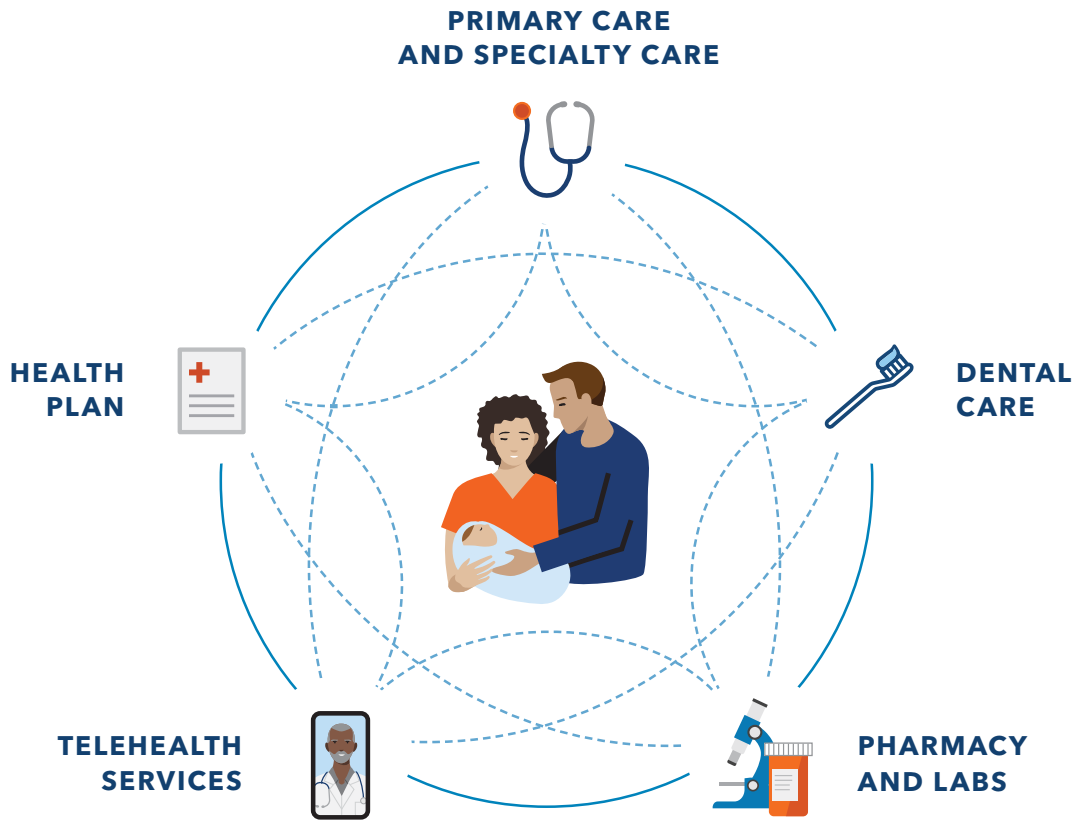
Enrolling during a special enrollment period

- Are you getting married, moving, or losing your health coverage? You can also enroll or change your coverage at other times throughout the year if you have a qualifying life event.
- Visit kp.org/specialenrollment for a list of qualifying life events and instructions.

Want to talk? We're here to help.

A Kaiser Permanente enrollment specialist can answer your questions – like where to get care or what healthy extras are included. Call **1-800-494-5314 (TTY 711)**.





Built to make your life easier

Combined care and coverage means your Kaiser Permanente doctors, hospitals, and health plan benefits are all connected and committed to providing you with exceptional care tailored to your needs.

It's easier access to specialists and the latest treatments.

It's predictable costs and less paperwork.

It's the care, when you need it.



Find out how we can help you stay healthy and keep doing what you love.

kp.org/allthatisyouth

Care that's **personalized**

For the you who deserves to be understood

Kaiser Permanente doctors have one priority: your health. Your electronic health record connects your care team with your health history, so your doctor can plan the care for your needs. They learn your lifestyle, risks, and goals to understand what matters most to you and be your health advocate.



Explore care that fits your life.

kp.org/connectedtocare

We guide you through every step of your care



Your Kaiser Permanente health history lives on your electronic health record.



Your doctor guides you through appointments and referrals.



Your health record is available to you and your care team 24/7.



Your care team lets you know when to schedule checkups and tests.

Care that's convenient

For the you with a busy schedule

Visit kp.org or use our app to make a routine, same-day or next-day appointment in person, or talk to a clinician 24/7 by phone or video.¹ No matter how you connect, you'll talk with a medical professional who can see your health history and pick up where you left off.

Do more in one visit

Many of our Kaiser Permanente facilities have pharmacies and labs in the same building, so you can see your doctor, get your tests, and pick up your prescriptions all in one stop.

Your health at your fingertips

- Get 24/7 virtual care
- Email your care team with non-urgent questions
- View most lab results and doctor's notes
- Refill most prescriptions
- Check in for appointments
- Pay bills and view statements



See how the Kaiser Permanente app puts you in control.
kp.org/mobile

FAST COMPANY | **THE WEBBY AWARDS**

Our mobile app won Fast Company's 2022 Design Company of the Year and the 2022 People's Voice Webby award for Health and Fitness Apps.

You're covered while traveling



If you're planning to travel, we can help you manage your vaccinations, refill prescriptions, and more. And once you're on the go, you're covered for emergency care anywhere in the world – even at non-Kaiser Permanente facilities.

Care that's world class

For the you who expects the best

No matter your needs – mental health, maternity, cancer care, heart health, and beyond – you have access to doctors, cutting-edge technology, and evidence-based care.



Learn how our doctors and specialists work for you.

kp.org/specialtycare



We're a national leader in screening rates and research, and we're among the top-rated health plans in every state we serve.^{2,3,4}

Kaiser Permanente members are:



33%

more likely to survive heart disease⁵

52%

more likely to survive colorectal cancer⁶

20%

less likely to experience premature death due to cancer⁷

Care that's all encompassing

For the you who wants to explore all your health options

Kaiser Permanente members can get help with depression, anxiety, addiction, and mental or emotional health – without a referral. You also have access to self-care apps to help your overall mental wellness.^{8,9}



Calm

The number one app for sleep and meditation



Ginger

Text one-on-one with an emotional support coach anytime, anywhere¹⁰



myStrength

Build a personalized plan to strengthen your emotional health



Find out more about mental health care.
kp.org/mentalhealth

Resources for everyday wellness and dental care

Take advantage of classes, services, and programs to help you achieve your health and fitness goals.¹¹

- Acupuncture, massage therapy, and chiropractic care
- Reduced rates on gym memberships
- Healthy lifestyle programs
- Wellness coaching
- Online fitness with the ClassPass app
- Mental health services

For almost 50 years, we have been helping our members thrive with dental care and coverage that connects seamlessly to their health plan, in one easy-to-use package.

- 21 convenient locations throughout Oregon and SW Washington
- More than 160 dentists and specialists to choose from
- Virtual dental care that allows you to get dental care advice, with no copay¹²
- Ability to take care of minor medical needs, like vaccinations, at your dental visit¹³



Visit kp.org/dental/nw to learn more

Care that's dependable

For the you who wants a doctor you trust

Your health is a lifelong journey, and we want you to have a doctor to go the distance. We hire doctors and staff who often speak more than one language and deliver care that's sensitive to your culture, ethnicity, and lifestyle. And you can choose or change your doctor anytime.



From finding the right doctor to transitioning care, we'll help you with every step.

kp.org/newmember



Dr. Weniger was relatable, kind, and thorough. By the end of my visit, I knew I made the right choice in Kaiser Permanente.



– **Aimee**, new member

There are many convenient ways to get care – including in-person care, e-visits, 24/7 virtual care, 24/7 nurse advice, and scheduled video and phone appointments with your Kaiser Permanente care team. Plus, members have access to:

- Same-day and next-day nonemergency and preventive health care at Care Essentials by Kaiser Permanente retail clinics.
- Self-referred alternative care, such as acupuncture and massage therapy, with providers in the CHP Group network.
- Affiliate providers for primary and specialty care.
- Mail-order pharmacy service to fill and refill most prescriptions.



Visit kp.org/getcare to learn more

Choosing your health plan

We offer a variety of plans to help fit your needs and budget. All of them offer the same quality care, but the way they split the costs is different.

Copay plans – gold

Copay plans are the simplest. You know in advance how much you'll pay for care like doctor visits and prescriptions. This amount is called your copay. Your monthly premium is higher, but you'll pay much less when you get care.

Deductible plans – gold, silver, and bronze

With a deductible plan, your monthly premium is lower, but you'll need to pay the full charges for most covered services until you reach a set amount, known as your deductible. Then you'll start paying less – a copay or coinsurance. Depending on your plan, some services, like office visits or prescriptions, may be available at a copay or coinsurance before you reach your deductible.

HSA-qualified high deductible health plans – silver and bronze

HSA-qualified deductible plans are deductible plans that give you the option of setting up a health savings account (HSA) to pay for eligible health care costs, including copays, coinsurance, and deductible payments. You won't pay federal taxes on the money in this account.

You can use your HSA anytime to pay for care, including some services that may not be covered by your plan, like eyeglasses, adult dental care, or chiropractic services.¹⁴ If you have money left in your HSA at the end of the year, it will roll over for you to use the next year.

Find a facility near you

Having a wide selection of health care providers in convenient locations is important. That's why we have medical facilities and dental offices in 5 areas: southwest Washington, Salem, Longview, Eugene-Springfield, and the Portland metropolitan area.

Locate a medical provider

Just visit kp.org/newmember, select your region, and click on "Choose a personal physician" under "Getting Started." Next, choose a physician, physician's assistant, or nurse practitioner as your primary care participating provider in these departments:

- Family Medicine for children and adults
- Internal Medicine for members 18 and older
- Ob-Gyn for female members (certified nurse-midwives also available)
- Pediatrics for members under 18

Our medical staff directory lists both primary care and specialty care providers, and shows their education, gender, languages spoken, and more.

You can download the directory from the "Forms and Publications" section of the website. Or, to have one sent to you, contact Member Services at **1-800-813-2000** (TTY **711**) from 8 a.m. to 6 p.m., Monday through Friday (closed major holidays).

For language interpretation services, call **1-800-324-8010**.

Talk to a new member specialist

Call our dedicated New Member Welcome Desk at **1-888-491-1124** (TTY **711**), Monday through Friday, 8 a.m. to 6 p.m., and talk with a specialist who can help you get the most out of your benefits quickly and easily. They can assist you with selecting a provider, transferring medical records and prescriptions, setting appointments, and more.

Our locations

We provide quality care to more than 600,000 members in Oregon and Southwest Washington. Our service area extends from Eugene, Oregon, to Longview, Washington, and includes medical offices, Vision Essentials by Kaiser Permanente optical retail locations, urgent care clinics, hospitals, and Care Essentials clinics. We also have a network of affiliated providers for routine, urgent, or emergency care.

For more information on our medical facilities, visit kp.org/facilities.

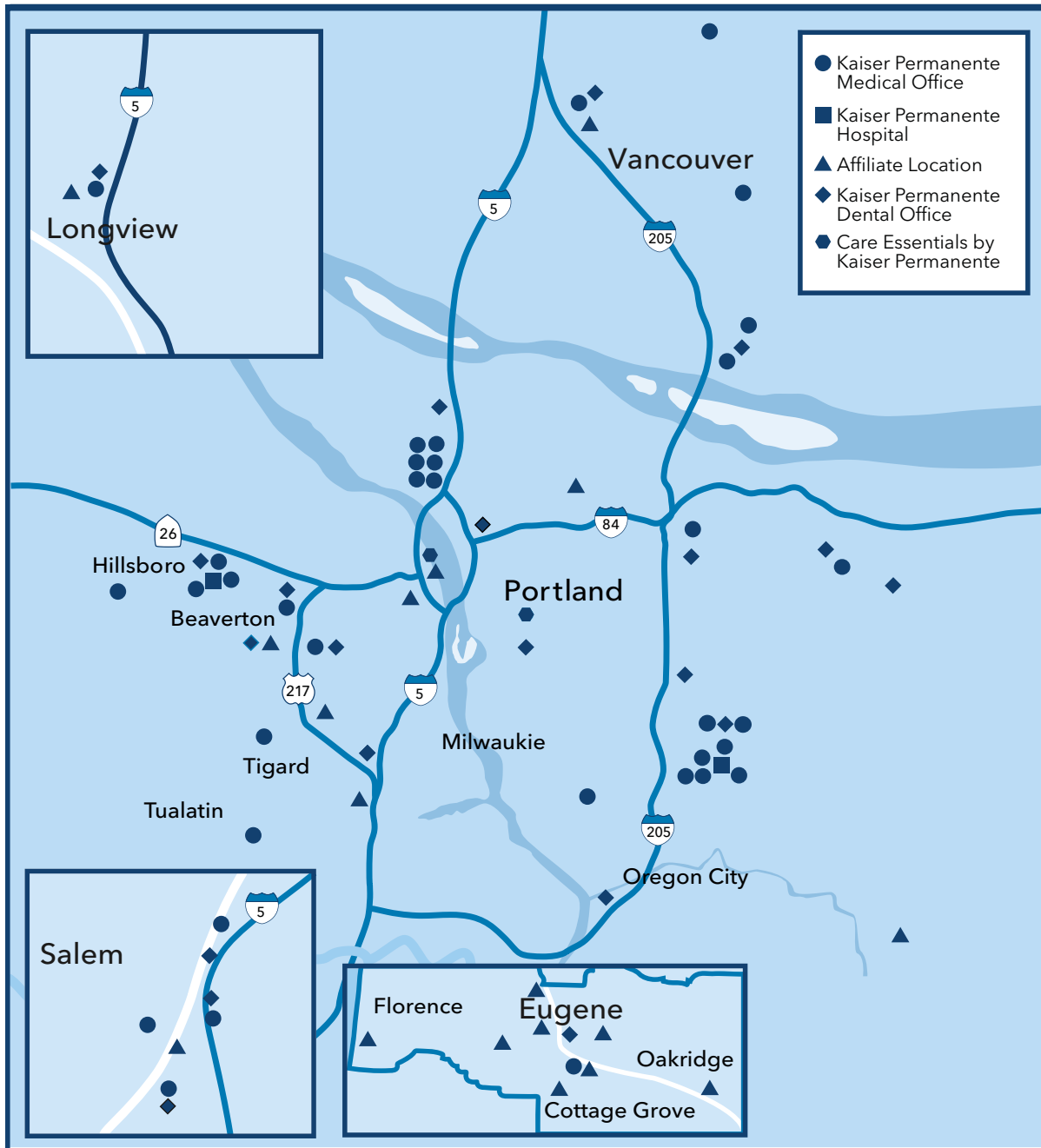
Dental care

With 21 dental offices to choose from, it's easy to find a location that's convenient for you. For more information about our dental plans and the wide range of services available, please visit kp.org/dental/nw.

Northwest locations



Our goal is to make it as easy and convenient as possible for you to get the care you need when you need it. Please refer to the map below or visit kp.org/facilities to find the one nearest you.



Maps not to scale

Complete care to help you live a fuller, healthier life

With Kaiser Permanente, you have a trusted partner who considers your health a priority and makes it easier to get the care you need. That's why members stay with Kaiser Permanente nearly 3 times as long as other health plans.¹⁵

Want to learn more?



Visit kp.org/allthatisyou to shop plans and get help with your health care questions.

Call **1-800-494-5314** (TTY **711**) to talk to an enrollment specialist.

Current members with questions can call Member Services at **1-800-813-2000** (TTY **711**).



1. When appropriate and available. If you travel out of state, phone appointments and video visits may not be available due to state laws that may prevent doctors from providing care across state lines. Laws differ by state. **2.** Kaiser Permanente 2022 HEDIS® scores. Benchmarks provided by the National Committee for Quality Assurance (NCQA) Quality Compass® and represent all lines of business. Kaiser Permanente combined region scores were provided by the Kaiser Permanente Department of Care and Service Quality. The source for data contained in this publication is Quality Compass 2022 and is used with the permission of NCQA. Quality Compass 2022 includes certain CAHPS data. Any data display, analysis, interpretation, or conclusion based on these data is solely that of the authors, and NCQA specifically disclaims responsibility for any such display, analysis, interpretation, or conclusion. Quality Compass® and HEDIS® are registered trademarks of NCQA. CAHPS® is a registered trademark of the Agency for Healthcare Research and Quality. **3.** 2021 Annual Report, Kaiser Permanente, [about.kaiserpermanente.org/who-we-are/annual-reports/2021-annual-report](https://www.kaiserpermanente.org/who-we-are/annual-reports/2021-annual-report). **4.** NCQA's Private Health Insurance Plan Ratings 2022-2023, National Committee for Quality Assurance, 2022: Kaiser Foundation Health Plan of Colorado – HMO (rated 4 out of 5); Kaiser Foundation Health Plan of Georgia, Inc. – HMO (rated 4 out of 5); Kaiser Foundation Health Plan, Inc., of Hawaii – HMO (rated 4 out of 5); Kaiser Foundation Health Plan of the Mid-Atlantic States, Inc. – HMO (rated 5 out of 5); Kaiser Foundation Health Plan, Inc., of Northern California – HMO (rated 4.5 out of 5); Kaiser Foundation Health Plan of the Northwest – HMO (rated 4 out of 5); Kaiser Foundation Health Plan, Inc., of Southern California – HMO (rated 4.5 out of 5); Kaiser Foundation Health Plan of Washington – HMO (rated 4 out of 5). **5.** Robert Pearl and Brian Wayling, "The Telehealth Era Is Just Beginning," *Harvard Business Review*, May-June 2022. **6.** Theodore R. Levin, MD, et al., "Effects of Organized Colorectal Cancer Screening on Cancer Incidence and Mortality in a Large, Community-Based Population," *Gastroenterology*, November 2018. **7.** Elizabeth A. McGlynn, PhD, et al., "Measuring Premature Mortality Among Kaiser Permanente Members Compared to the Community," July 20, 2022. **8.** The apps and services described above are not covered under your health plan benefits, are not a Medicare-covered benefit, and are not subject to the terms set forth in your *Evidence of Coverage* or other plan documents. The apps and services may be discontinued at any time. Some classes vary by location and may require fees. **9.** Calm and myStrength can be used by members 13 and over. The Ginger app and services are not available to any members under 18 years old. **10.** Eligible Kaiser Permanente members can text with a coach using the Ginger app for 90 days per year. After the 90 days, members can continue to access the other services available on the Ginger app for the remainder of the year at no cost. **11.** Some of these services may not be covered under your health plan benefits and are not subject to the terms set forth in your *Evidence of Coverage* or other plan documents. These services may be discontinued at any time without notice. **12.** When receiving care from Kaiser Permanente dental providers. **13.** Medical services are available at select dental locations. You must be enrolled in a Kaiser Permanente medical plan to receive medical care. **14.** For a complete list of services you can use your HSA to pay for, see *Publication 502, Medical and Dental Expenses*, at [irs.gov](https://www.irs.gov). **15.** Kaiser Permanente internal data, 2019; "12 Trends Influencing the Future of Workplace Benefits," Aflac, 2018; U.S. Bureau of Labor Statistics, 2018.

Nondiscrimination Notice

Kaiser Foundation Health Plan of the Northwest (Kaiser Health Plan) complies with applicable federal and state civil rights laws and does not discriminate on the basis of race, color, national origin, age, disability, sex, gender identity, or sexual orientation. Kaiser Health Plan does not exclude people or treat them differently because of race, color, national origin, age, disability, sex, gender identity, or sexual orientation. We also:

- Provide no cost aids and services to people with disabilities to communicate effectively with us, such as:
 - Qualified sign language interpreters
 - Written information in other formats, such as large print, audio, and accessible electronic formats
- Provide no cost language services to people whose primary language is not English, such as:
 - Qualified interpreters
 - Information written in other languages

If you need these services, call Member Services at **1-800-813-2000** (TTY: **711**).

If you believe that Kaiser Health Plan has failed to provide these services or discriminated in another way on the basis of race, color, national origin, age, disability, sex, gender identity, or sexual orientation, you can file a grievance with our Civil Rights Coordinator, by mail, phone, or fax. If you need help filing a grievance, our Civil Rights Coordinator is available to help you. You may contact our Civil Rights Coordinator at: Member Relations Department, Attention: Kaiser Civil Rights Coordinator, 500 NE Multnomah St. Ste 100, Portland, OR 97232-2099, Phone: **1-800-813-2000** (TTY: **711**), Fax: **1-855-347-7239**.

You can also file a civil rights complaint with the U.S. Department of Health and Human Services, Office for Civil Rights, electronically through the Office for Civil Rights Complaint portal, available at <https://ocrportal.hhs.gov/ocr/portal/lobby.jsf>, or by mail or phone at: U.S. Department of Health and Human Services, 200 Independence Avenue SW, Room 509F, HHH Building, Washington, DC 20201, Phone: 1-800-368-1019, TDD: 1-800-537-7697. Complaint forms are available at www.hhs.gov/ocr/office/file/index.html.

For Washington Members

You can also file a complaint with the Washington State Office of the Insurance Commissioner, electronically through the Office of the Insurance Commissioner Complaint portal, available at <https://www.insurance.wa.gov/file-complaint-or-check-your-complaint-status>, or by phone at 1-800-562-6900, or 360-586-0241 (TDD). Complaint forms are available at <https://fortress.wa.gov/oic/onlineservices/cc/pub/complaintinformation.aspx>.

Help in Your Language

ATTENTION: If you speak English, language assistance services, free of charge, are available to you. Call **1-800-813-2000** (TTY: **711**).

አማርኛ (Amharic) ማህታወሻ: የሚናገሩት ቋንቋ አማርኛ ከሆነ የትርጉም እርዳታ ድርጅቶች፣ በነጻ ሊያግዝዎት ተዘጋጅተዋል፡ ወደ ሚከተለው ቁጥር ይደውሉ **1-800-813-2000** (TTY: **711**)።

العربية (Arabic) ملحوظة: إذا كنت تتحدث العربية، فإن خدمات المساعدة اللغوية تتوافر لك بالمجان. اتصل برقم **1-800-813-2000** (TTY: **711**).

中文 (Chinese) 注意: 如果您使用繁體中文，您可以免費獲得語言援助服務。請致電**1-800-813-2000** (TTY: **711**)。

فارسی (Farsi) توجه: اگر به زبان فارسی گفتگو می کنید، تسهیلات زبانی بصورت رایگان برای شما فراهم می باشد. با **1-800-813-2000** (TTY: **711**) تماس بگیرید.

Français (French) ATTENTION: Si vous parlez français, des services d'aide linguistique vous sont proposés gratuitement. Appelez le **1-800-813-2000** (TTY: **711**).

Deutsch (German) ACHTUNG: Wenn Sie Deutsch sprechen, stehen Ihnen kostenlos sprachliche Hilfsdienstleistungen zur Verfügung. Rufnummer: **1-800-813-2000** (TTY: **711**).

日本語 (Japanese) 注意事項: 日本語を話される場合、無料の言語支援をご利用いただけます。**1-800-813-2000** (TTY: **711**) まで、お電話にてご連絡ください。

ខ្មែរ (Khmer) ប្រយ័ត្ន: បើសិនជាអ្នកនិយាយភាសាខ្មែរ, សេវាជំនួយផ្នែកភាសា ដោយមិនគិតថ្លៃ គឺអាចមានសំរាប់បំរើអ្នក។ ចូរ ទូរស័ព្ទ **1-800-813-2000** (TTY: **711**)។

한국어 (Korean) 주의: 한국어를 사용하시는 경우, 언어 지원 서비스를 무료로 이용하실 수 있습니다. **1-800-813-2000** (TTY: **711**) 번으로 전화해 주십시오.

ລາວ (Laotian) ໂປດຊານ: ຖ້າວ່າ ທ່ານເວົ້າພາສາ ລາວ, ການບໍລິການຊ່ວຍເຫຼືອດ້ານພາສາ, ໂດຍບໍ່ເສັຽຄ່າ, ແມ່ນມີ ພ້ອມໃຫ້ທ່ານ. ໂທ **1-800-813-2000** (TTY: **711**).

Afaan Oromoo (Oromo) XIYEEFFANNAA: Afaan dubbattu Oroomiffa, tajaajila gargaarsa afaanii, kanfaltiidhaan ala, ni argama. Bilbilaa **1-800-813-2000** (TTY: **711**).

ਪੰਜਾਬੀ (Punjabi) ਧਿਆਨ ਦਿਓ: ਜੇ ਤੁਸੀਂ ਪੰਜਾਬੀ ਬੋਲਦੇ ਹੋ, ਤਾਂ ਭਾਸ਼ਾ ਵਿੱਚ ਸਹਾਇਤਾ ਸੇਵਾ ਤੁਹਾਡੇ ਲਈ ਮੁਫਤ ਉਪਲਬਧ ਹੈ। **1-800-813-2000** (TTY: **711**) 'ਤੇ ਕਾਲ ਕਰੋ।

Română (Romanian) ATENȚIE: Dacă vorbiți limba română, vă stau la dispoziție servicii de asistență lingvistică, gratuit. Sunați la **1-800-813-2000** (TTY: **711**).

Русский (Russian) ВНИМАНИЕ: если вы говорите на русском языке, то вам доступны бесплатные услуги перевода. Звоните **1-800-813-2000** (TTY: **711**).

Español (Spanish) ATENCIÓN: si habla español, tiene a su disposición servicios gratuitos de asistencia lingüística. Llame al **1-800-813-2000** (TTY: **711**).

Tagalog (Tagalog) PAUNAWA: Kung nagsasalita ka ng Tagalog, maaari kang gumamit ng mga serbisyo ng tulong sa wika nang walang bayad. Tumawag sa **1-800-813-2000** (TTY: **711**).

ไทย (Thai) เรียน: ถ้าคุณพูดภาษาไทย คุณสามารถใช้บริการช่วยเหลือทางภาษาได้ฟรี โทร **1-800-813-2000** (TTY: **711**).

Українська (Ukrainian) УВАГА! Якщо ви розмовляєте українською мовою, ви можете звернутися до безкоштовної служби мовної підтримки. Телефонуйте за номером **1-800-813-2000** (TTY: **711**).

Tiếng Việt (Vietnamese) CHÚ Ý: Nếu bạn nói Tiếng Việt, có các dịch vụ hỗ trợ ngôn ngữ miễn phí dành cho bạn. Gọi số **1-800-813-2000** (TTY: **711**).

2024 Washington Enrollment Guide
Clark and Cowlitz counties

In Oregon and Southwest Washington (Clark and Cowlitz counties), all plans are offered and underwritten by Kaiser Foundation Health Plan of the Northwest, 500 NE Multnomah St., Suite 100, Portland, OR 97232.

