

Find your healthy place

With care for all that is you



Go where you feel like your best self

We can help you get to your healthy place – no matter where it is. Care at Kaiser Permanente feels easier and faster, with the help of connected caregivers, more ways to get care, and support for a healthy mind, body, and spirit. Welcome to care for all that is you.

Important open enrollment dates for 2023

- The open enrollment period for 2023 coverage runs from November 1, 2022, through January 15, 2023.
- You can change or apply for coverage through Kaiser Permanente, or we can help you apply through Connect for Health Colorado.
- For coverage that starts on January 1, 2023, we must receive your Application for health coverage no later than December 15, 2022.

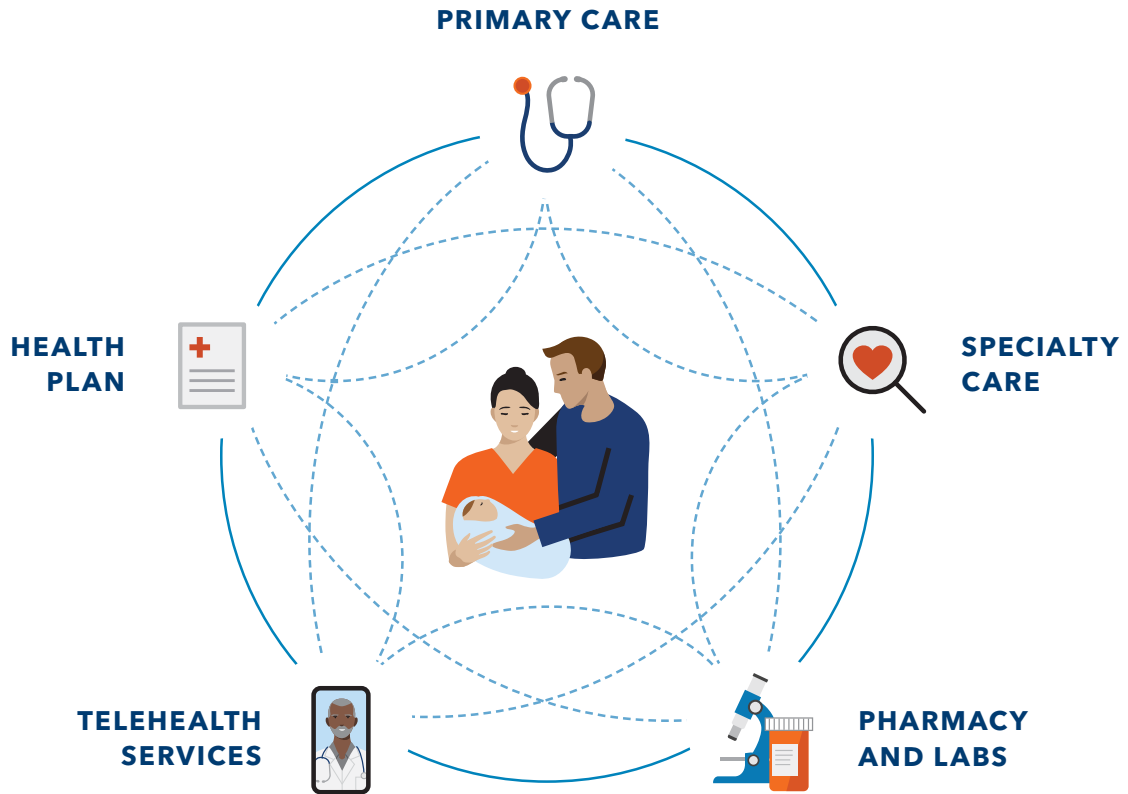
Enrolling during a special enrollment period

- Are you getting married, moving, or losing your health coverage? You can also enroll or change your coverage at other times throughout the year if you have a qualifying life event.
- Visit kp.org/speciaalenrollment for a list of qualifying life events and instructions.

Want to talk? We're here to help.

A Kaiser Permanente enrollment specialist can answer your questions – like where to get care or what healthy extras are included. Call **1-800-494-5314 (TTY 711)**.





Built to make your life easier

Kaiser Permanente combines care and coverage – which makes us different than your other health care options. Your doctors, hospitals, and health plan work together to make high-quality health care easier to get. That means you'll have peace of mind knowing care for your total health is there when and where you need it – from your doctor's office to your living room.

To see what it's like to be a member, visit kp.org/myhealthyplace.

"I really appreciate the coordination of care. Every doctor and specialist can access my records, and I don't have to waste valuable time repeating medical histories."

–Lisa, Kaiser Permanente member

Care centered around you

Care at Kaiser Permanente isn't one-size-fits-all. Our physician-led teams work together to make sure the care you get is tailored to your needs. Your Kaiser Permanente care team is part of the same network, making it easier to share information, see your health history, and deliver high-quality, personalized care – when and where you need it.

Your healthy place should reflect all that is you

We believe your story, background, and values are as important as your health history. To help deliver care that's sensitive to your culture, ethnicity, and lifestyle, we:

- Hire doctors and staff who speak more than one language
- Offer phone interpretation services in more than 150 languages
- Improved health outcomes among diverse populations for conditions like high blood pressure, diabetes, and colon cancer¹

Get care with the help of your electronic health record



Share your health history and any concerns with your personal doctor.



Your doctor coordinates your care, so you don't have to worry about where to go or who to call next.



Future care teams have a full picture of your Kaiser Permanente health history – without you having to repeat your story.



With your health records in hand, your care team knows your needs in the moment and reminds you to schedule checkups and tests. Plus, you can view your records 24/7.

Convenient ways to get care

Same-day, next-day, and weekend appointments are available at most locations, and by phone and video.²



Visit us in person at a location near you.



Talk to a health care professional by phone or video.²



24-hour virtual care on your schedule

If a trip to the doctor's office doesn't fit your schedule, it's easy to get fast, personalized support – daytime, nighttime, anytime.

- Schedule a phone or video visit with a doctor or clinician.²
- Get 24/7 care advice by phone.
- Email your Kaiser Permanente doctor's office with nonurgent questions.
- Use our e-visit questionnaire to get personalized care advice for certain conditions, order many tests, and get some prescriptions online.
- Chat online with a Kaiser Permanente clinician or mental health specialist.¹⁴

When connecting to care virtually, you may save money as well as time. Telehealth is covered at no cost with most plans.³



Prescription delivery

Fill prescriptions online or with the Kaiser Permanente app.⁴

- Have most delivered directly to your front door.
- Get same-day or next-day delivery for an additional fee.⁵
- Order them for same-day pickup.



Kaiser Permanente app

Manage your health 24/7 with our app. It's an easy, convenient way to do everything described above – anytime, anywhere.⁶

Care away from home

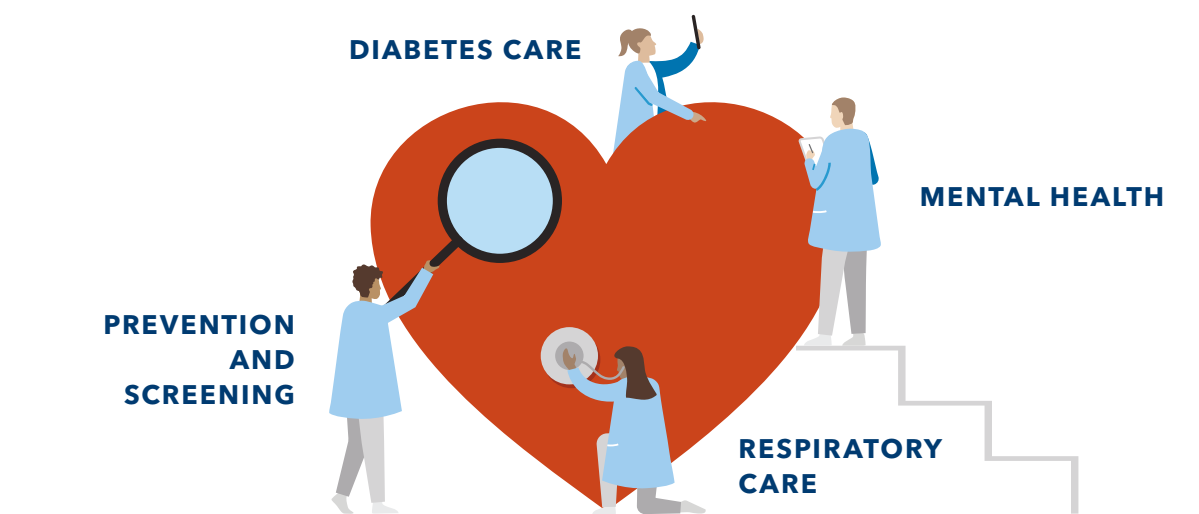
You're covered for urgent and emergency care anywhere in the world. And if you're planning to travel, we can help you stay on top of your health when you're away from home. We'll work with you to see if you need a vaccination, refill prescriptions, and more.



Industry-leading clinical quality

We're known for catching problems early with preventive care. But if your health needs serious attention, our specialty care has you covered.

In 2021, Kaiser Permanente led the nation as the top performer in 42 effectiveness-of-care measures. The closest national competitor led in only 14.⁷



Specialty care when you need it

No matter your needs – mental health, maternity, cancer care, heart health, and more – you'll have access to great doctors, advanced technology, and evidence-based care to help you recover quickly.

A collaborative approach to care

With one of the largest multispecialty medical groups in the country, we can help connect you with the right specialist who'll create a personalized plan for your care. To learn how our specialists work together in a connected system, visit kp.org/specialtycare.

Support for ongoing conditions

If you have a condition like diabetes or heart disease, you can enroll in a disease management program for personal coaching and support. With a well-rounded approach backed by proven best practices and advanced technology, we'll help you get the care you need to continue living life to the fullest.

A better experience from the start

We guide you through each step of joining Kaiser Permanente, so you get the care you need without missing a beat.



Search profiles to find the right doctor

Our online doctor profiles let you browse the many doctors and locations in your area, even before you enroll. So you can join knowing you've found a doctor who fits your needs.



Transition your care

Easily move prescriptions and schedule a visit with a doctor who's close to your home, work, or school. From day one, you'll have the support you need to help reach your health goals.



Connect to care online

After you enroll, create an account at kp.org and download the Kaiser Permanente app.⁶ Then manage your health on your schedule – whenever, wherever.

Health care doesn't have to be confusing

If you don't know an HMO from an HSA, you're not alone. But rest assured – we're here to make health care easier to understand. Get help learning the basics at kp.org/learnthebasics.



Making the most of your membership

Good health goes beyond the doctor's office. Find your healthy place by exploring some of the convenient features and extras available to members.⁸ Many of these resources are available at no additional cost.



24/7 Emotional Support

The Ginger app provides 24/7 emotional-support coaching via text at no additional cost and without a referral.¹⁵



Reduced rates on gym memberships

Stay active by joining a local fitness center, plus enjoy thousands of digital workout videos.



Healthy lifestyle programs

Connect to better health with online programs to help you lose weight, quit smoking, reduce stress, and more.



Wellness coaching

Get help reaching your health goals by working one-on-one with a wellness coach by phone.

Extras for your total health



Use meditation and mindfulness to build mental resilience, reduce stress, and improve sleep.



Set mental health goals, track progress, and get support managing depression, anxiety, and more.



Choose from thousands of on-demand workout videos and get reduced rates on livestream and in-person classes.

Care meets you where you are

When you're a member, you get access to our doctors and facilities – conveniently located near where you live, work, and play. And when you can't come to us, you can get the care you need when you need it.²

117.8M

VIRTUAL CONNECTIONS

between members and their care teams in 2021⁹



12.6M

MEMBERS

covered for care needs in mind and body



23,656

DOCTORS AND SPECIALISTS

connected to easily share the latest medical advancements



42.5M

PRESCRIPTION DELIVERIES

to members' homes in 2021



773

HOSPITALS AND MEDICAL OFFICES

with many services often under one roof, so you can get everything done quickly



9

AREAS

to get Kaiser Permanente care in person – California, Colorado, Georgia, Hawaii, Maryland, Oregon, Virginia, Washington, and Washington, D.C.



Your choice of doctors and locations

Visit kp.org/doctors to see all Kaiser Permanente locations near you and browse our online doctor profiles. You can choose your personal doctor and change anytime, for any reason.



Doctor and facility counts include affiliated medical professionals and locations. These statistics are from multiple Kaiser Permanente locations in various states.

Choosing your health plan

We offer a variety of plans to help fit your needs and budget. All of them offer the same quality care, but the way they split the costs is different.

Network options

Kaiser Permanente offers 2 network options for health plans in the Denver/Boulder area, with a single network offering for plans in Colorado Springs, Pueblo, and Northern Colorado.

With both the Kaiser Permanente Colorado and the Kaiser Permanente Select¹¹ networks, members can receive care:

- From primary care providers and specialists at any of the 30 Kaiser Permanente medical offices throughout Colorado, including our state-of-the-art Premier Medical Offices in Colorado Springs.
- Through Kaiser Permanente's robust offering of virtual options, including online Chat and 24/7 on-demand video visits.

If you live in Colorado Springs or the surrounding area, your plan will be in the KP Select network. As a KP Select member, you'll have the choice of 1,100+ Kaiser Permanente providers and 1,400+ affiliated physicians,¹² as well as several hospitals¹³ in the Colorado Springs and Denver/Boulder areas.

In Denver/Boulder you have 2 network options. The Kaiser Permanente Colorado network is the option for individuals and families who would like a greater choice among affiliated providers¹² and hospitals. For those looking for an option where their premiums may be lower, **KP Select¹¹** offers a more tailored network of affiliated providers and hospitals.¹³ **In Pueblo and Northern Colorado,** your plan will be in the **Kaiser Permanente Colorado network.** The Select tailored network is not available in your area.

For information about doctors and locations in your area, go to kp.org/doctors. To see if the Select network is available in your area, visit kp.org/kpselect/co.

Copay plans – gold

Copay plans are the simplest. You know in advance how much you'll pay for care like doctor visits and prescriptions. This amount is called your copay. Your monthly premium is higher, but you'll pay much less when you get care.

Deductible plans – gold, silver, bronze, and catastrophic

With a deductible plan, your monthly premium is lower, but you'll need to pay the full charges for most covered services until you reach a set amount, known as your deductible. Then you'll start paying less – a copay or coinsurance. Depending on your plan, some services, like office visits or prescriptions, may be available at a copay or coinsurance before you reach your deductible.

HSA-qualified high deductible health plans – silver and bronze

HSA-qualified deductible plans are deductible plans with a special feature. With this plan, you can set up a health savings account (HSA) to pay for health costs like copays, coinsurance, and deductible payments. And you won't pay federal taxes on the money in this account. You can use your HSA anytime to pay for care, including some services that may not be covered by your plan, such as eyeglasses or adult dental.¹⁰ And if you have money left in your HSA at the end of the year, it will roll over for you to use the next year.

Example of your costs for care

Let's say you hurt your ankle. You visit your personal doctor, who orders an X-ray. It's just a sprain, so the doctor prescribes a generic pain medication. Here's an example of what you'd pay out of pocket for these services with each type of health plan.

| Plan name | Office visit | X-ray | Generic drug |
|--|---|----------------------|------------------------|
| KP CO Gold 0/20 RX Copay (no deductible) | \$20 Preferred Provider/ \$40 Affiliated Provider [†] | 35% | \$10* |
| KP CO Silver 5000/25 X (\$5,000 deductible) | \$25 Preferred Provider/ \$45 Affiliated Provider [†] | 40% after deductible | \$15* |
| KP CO Bronze 6500/35%/HSA (\$6,500 deductible) | 35% after deductible Preferred Provider/50% after deductible Affiliated Provider [†] | 35% after deductible | \$35 after deductible* |

*Mail order: 90-day supply of qualified prescriptions for the cost of a 60-day supply.

[†]Affiliated Providers practice outside Kaiser Permanente medical offices. Visit kp.org/doctors for a list of participating providers.

The cost estimates above are from kp.org/treatmentestimates. Visit this site anytime to get an idea of what the charges for common services might be before you reach your deductible.





Do you qualify for financial help?


You may be eligible for federal or state financial assistance to help you pay for care or coverage. Visit buykp.org/apply for details.


Understanding the plans: benefit highlights

The charts on the next few pages show you a sample of each plan’s benefits. Review the diagram below to help you understand how to read those charts.

Here’s a quick look at how to use the chart

| Benefit highlights |  KP CO Silver 2200/25 X  E KP Select CO Silver 2200/25 X |
|---|---|
| Plan type | Deductible |
| Annual medical deductible (individual/family) | \$2,200/\$4,400 |
| Annual out-of-pocket maximum (individual/family) | \$9,100/\$18,200 |
| Benefits | |
| Virtual care | |
| Chat, Email, E-visit, Phone, and Video visit | No charge |
| Preventive care | |
| Routine physical exam, mammograms, etc. | No charge |
| Outpatient services (per visit or procedure) | |
| Primary care office visit | \$25 Preferred Provider/ \$45 Affiliated Provider [†] |
| Specialty care office visit | \$75 |
| Most X-rays | 35% after deductible |
| Most lab tests | \$30 |
| MRI, CT, PET | \$750 |
| Outpatient surgery | 25% after deductible ambulatory surgery center/35% after deductible outpatient department of hospital |
| Mental health visit | \$25 |
| Inpatient hospital care | |
| Room and board, surgery, anesthesia, X-rays, lab tests, medications, mental health care | 35% after deductible |
| Maternity | |
| Routine prenatal care visit, first postpartum visit | 35% after deductible |
| Delivery and inpatient well-baby care | 35% after deductible |
| Emergency and urgent care | |
| Emergency department visit | 35% after deductible |
| Urgent care visit | \$100 |
| Prescription drugs (up to a 30-day supply) | |
| Generic | \$20* |
| Preferred brand | \$85 after \$1,000 pharmacy deductible* |
| Non-preferred brand | 35% after \$1,000 pharmacy deductible |
| Specialty | 35% after \$1,000 pharmacy deductible |
| Whole health | |
| Healthy services | Mental Health Wellness Exam, Chiropractic and Acupuncture visits, gender affirming care, wellness coaching, fitness club discounts, health education classes. |

 Offered through Kaiser Permanente

 Offered through the health benefit exchange, Connect for Health Colorado

Annual deductible

You need to pay this amount before your plan starts helping you pay for most covered services. Under this sample plan, you’d pay the full charges for covered services until you reach \$2,200 for yourself or \$4,400 for your family. Then you’d start paying copays or coinsurance.

Annual out-of-pocket maximum

This is the most you’ll pay for care during the calendar year before your plan starts paying 100% for most covered services. In this example, you’d never pay more than \$9,100 for yourself and no more than \$18,200 for your family for your copays, coinsurance, and deductible in a calendar year.

Covered before you reach the deductible

With some services, you’ll only pay a copay or coinsurance, regardless of whether you’ve reached your deductible. Under this plan, primary care visits are covered at a \$25 copay at a Kaiser Permanente medical office or at a \$45 copay at an affiliated provider – even before you meet your deductible. With our Silver deductible plans, primary care, specialty care, and urgent care visits all are covered before you reach the deductible.

Copay

After reaching your deductible, this is a percentage of the charges that you may pay for covered services. Here, you’d pay 35% of the cost per day for your inpatient hospital care after you reach your deductible. Your plan would pay the rest for the remainder of the calendar year.

Copay

This is the set amount you pay for covered services, usually after you reach your deductible. In this example, you’d start paying a \$100 copay for urgent care visits, whether or not you have met your deductible.

Prescription fill

New prescriptions for maintenance medications can be filled at any plan pharmacy. Refills for maintenance medications must be filled at Kaiser Permanente medical office pharmacies or through our mail-order program.

*Mail order: 90-day supply of qualified prescriptions for the cost of a 60-day supply.

[†]Affiliated Providers practice outside Kaiser Permanente medical offices. Visit kp.org/doctors for a list of participating providers.

After the first fill, maintenance drugs are required to be filled at a Kaiser Permanente medical office pharmacy, or through mail order.

KP Offered through Kaiser Permanente

E Offered through the health benefit exchange, Connect for Health Colorado

Financial assistance options are available for certain plans, and for Native Alaskans and American Indians on connectforhealthco.com.

| Benefit highlights | KP KP CO Bronze 8500/50 KP Select CO Bronze 8500/50 | E | KP KP CO Bronze 7000/50 RX Copay KP Select CO Bronze 7000/50 RX Copay | E | KP KP Colorado Option Bronze KP Select Colorado Option Bronze | E |
|--|--|----------|--|----------|--|----------|
| | Deductible | | Deductible | | Deductible | |
| Plan type | Deductible | | Deductible | | Deductible | |
| Annual medical deductible (individual/family) | \$8,500/\$17,000 | | \$7,000/\$14,000 | | \$7,000/\$14,000 | |
| Annual out-of-pocket maximum (individual/family) | \$9,100/\$18,200 | | \$9,100/\$18,200 | | \$9,100/\$18,200 | |
| Benefits | | | | | | |
| Virtual care | | | | | | |
| Chat, Email, E-visit, Phone, and Video visit | No charge | | No charge | | No charge | |
| Preventive care | | | | | | |
| Routine physical exam, mammograms, etc. | No charge | | No charge | | No charge | |
| Outpatient services (per visit or procedure) | | | | | | |
| Primary care office visit | First office visit \$50 Preferred Provider/ \$70 Affiliated Provider [†] ; additional visits no charge after deductible | | First 2 office visits \$50 Preferred Provider/ \$70 Affiliated Provider [†] ; additional visits no charge after deductible | | First 3 office visits no charge; additional visits \$50 after deductible | |
| Specialty care office visit | 50% after deductible | | 45% after deductible | | 50% after deductible | |
| Most X-rays | 50% after deductible | | 45% after deductible | | 50% after deductible | |
| Most lab tests | 50% after deductible | | 45% after deductible | | 50% after deductible | |
| MRI, CT, PET | 50% after deductible | | 45% after deductible | | 50% after deductible | |
| Outpatient surgery | 40% after deductible ambulatory surgery center/50% after deductible outpatient department of hospital | | 35% after deductible ambulatory surgery center/45% after deductible outpatient department of hospital | | 50% after deductible | |
| Mental health visit | No charge after deductible | | No charge | | No charge | |
| Inpatient hospital care | | | | | | |
| Room and board, surgery, anesthesia, X-rays, lab tests, medications, mental health care | 50% after deductible | | 45% after deductible | | 50% after deductible | |
| Maternity | | | | | | |
| Routine prenatal care visit, first postpartum visit | 50% after deductible | | 45% after deductible | | First 3 office visits no charge; additional visits \$50 after deductible | |
| Delivery and inpatient well-baby care | 50% after deductible | | 45% after deductible | | 50% after deductible | |
| Emergency and urgent care | | | | | | |
| Emergency department visit | 50% after deductible | | 45% after deductible | | 50% after deductible | |
| Urgent care visit | First office visit \$150; additional visits 50% after deductible | | First 2 office visits \$150; additional visits 45% after deductible | | 50% after deductible | |
| Prescription drugs (up to a 30-day supply) | | | | | | |
| Generic | \$30* | | \$30* | | \$30* | |
| Preferred brand | 50% after deductible | | \$200* | | \$200* | |
| Non-preferred brand | 50% after deductible | | \$450* | | \$350* | |
| Specialty | 50% after deductible | | \$750* | | \$700* | |
| Whole health | | | | | | |
| Healthy services | Mental Health Wellness Exam, Chiropractic and Acupuncture visits, gender affirming care, wellness coaching, fitness club discounts, health education classes. | | Mental Health Wellness Exam, Chiropractic and Acupuncture visits, gender affirming care, wellness coaching, fitness club discounts, health education classes. | | Mental Health Wellness Exam, Chiropractic and Acupuncture visits, gender affirming care, wellness coaching, fitness club discounts, health education classes. | |

*Mail order: 90-day supply of qualified prescriptions for the cost of a 60-day supply.

† Affiliated Providers practice outside Kaiser Permanente medical offices. Visit kp.org/doctors for a list of participating providers.

After the first fill, maintenance drugs are required to be filled at a Kaiser Permanente medical office pharmacy, or through mail order.

This plan summary is intended to highlight only some of the most frequently asked questions about benefits and their copays, coinsurance, and deductibles. Please refer to the *Membership Agreement* for complete details on your plan or for specific limitations and exclusions. To request a copy of the *Membership Agreement*, please visit kp.org/plandocuments, call us at 1-800-632-9700, or contact your broker. For services subject to the deductible, you'll have to pay health care expenses out of pocket until you meet your deductible. Most deductibles, copays, and coinsurance contribute to the out-of-pocket maximum.

KP Offered through Kaiser Permanente

E Offered through the health benefit exchange, Connect for Health Colorado

Financial assistance options are available for certain plans, and for Native Alaskans and American Indians on connectforhealthco.com.

| Benefit highlights | KP E | KP E | KP |
|--|--|--|--|
| | KP CO Bronze 6500/50 KP Select CO Bronze 6500/50 | KP CO Bronze 6500/35%/HSA KP Select CO Bronze 6500/35%/HSA | KP CO Silver 6000/30 X KP Select CO Silver 6000/30 X |
| Plan type | Deductible | HSA Qualified | Deductible |
| Annual medical deductible (individual/family) | \$6,500/\$13,000 | \$6,500/\$13,000 | \$6,000/\$12,000 |
| Annual out-of-pocket maximum (individual/family) | \$9,100/\$18,200 | \$7,000/\$14,000 | \$9,100/\$18,200 |
| Benefits | | | |
| Virtual care | | | |
| Chat, Email, E-visit, Phone, and Video visit | No charge | No charge after deductible | No charge |
| Preventive care | | | |
| Routine physical exam, mammograms, etc. | No charge | No charge | No charge |
| Outpatient services (per visit or procedure) | | | |
| Primary care office visit | First 3 office visits \$50 Preferred Provider/ \$70 Affiliated Provider [†] ; additional visits no charge after deductible | 35% after deductible Preferred Provider/ 50% after deductible Affiliated Provider [†] | \$30 Preferred Provider/\$50 Affiliated Provider [†] |
| Specialty care office visit | 40% after deductible | 35% after deductible | \$100 |
| Most X-rays | 40% after deductible | 35% after deductible | 40% after deductible |
| Most lab tests | 40% after deductible | 35% after deductible | 40% after deductible |
| MRI, CT, PET | 40% after deductible | 35% after deductible | 40% after deductible |
| Outpatient surgery | 30% after deductible Ambulatory Surgery Center/40% after deductible Outpatient Department of hospital | 25% after deductible Ambulatory Surgery Center/35% after deductible Outpatient Department of hospital | 30% after deductible Ambulatory Surgery Center/40% after deductible Outpatient Department of hospital |
| Mental health visit | No charge after deductible | 35% after deductible | \$30 |
| Inpatient hospital care | | | |
| Room and board, surgery, anesthesia, X-rays, lab tests, medications, mental health care | 40% after deductible | 35% after deductible | 40% after deductible |
| Maternity | | | |
| Routine prenatal care visit, first postpartum visit | 40% after deductible | 35% after deductible | 40% after deductible |
| Delivery and inpatient well-baby care | 40% after deductible | 35% after deductible | 40% after deductible |
| Emergency and urgent care | | | |
| Emergency department visit | 40% after deductible | 35% after deductible | 40% after deductible |
| Urgent care visit | First 3 office visits \$150; additional visits 40% after deductible | 35% after deductible | \$100 |
| Prescription drugs (up to a 30-day supply) | | | |
| Generic | \$30* | \$35 after deductible* | \$25* |
| Preferred brand | 40% after deductible | 35% after deductible | \$100 |
| Non-preferred brand | 40% after deductible | 35% after deductible | 40% after deductible |
| Specialty | 40% after deductible | 35% after deductible | 40% after deductible |
| Whole health | | | |
| Healthy services | Mental Health Wellness Exam, Chiropractic and Acupuncture visits, gender affirming care, wellness coaching, fitness club discounts, health education classes. | Mental Health Wellness Exam, Chiropractic and Acupuncture visits, gender affirming care, wellness coaching, fitness club discounts, health education classes. | Mental Health Wellness Exam, Chiropractic and Acupuncture visits, gender affirming care, wellness coaching, fitness club discounts, health education classes. |

*Mail order: 90-day supply of qualified prescriptions for the cost of a 60-day supply.

[†] Affiliated Providers practice outside Kaiser Permanente medical offices. Visit kp.org/doctors for a list of participating providers.

After the first fill, maintenance drugs are required to be filled at a Kaiser Permanente medical office pharmacy, or through mail order.

This plan summary is intended to highlight only some of the most frequently asked questions about benefits and their copays, coinsurance, and deductibles. Please refer to the *Membership Agreement* for complete details on your plan or for specific limitations and exclusions. To request a copy of the *Membership Agreement*, please visit kp.org/plandocuments, call us at 1-800-632-9700, or contact your broker. For services subject to the deductible, you'll have to pay health care expenses out of pocket until you meet your deductible. Most deductibles, copays, and coinsurance contribute to the out-of-pocket maximum.

KP Offered through Kaiser Permanente

E Offered through the health benefit exchange, Connect for Health Colorado

Financial assistance options are available for certain plans, and for Native Alaskans and American Indians on connectforhealthco.com.

| Benefit highlights | KP E | KP E | KP E |
|---|---|---|---|
| | KP CO Silver 5000/25 KP Select CO Silver 5000/25 KP CO Silver 5000/25 X KP Select CO Silver 5000/25 X | KP Colorado Option Silver KP Select Colorado Option Silver KP Colorado Option Silver X KP Select Colorado Option Silver X | KP CO Silver 4500/30 RX Copay KP Select CO Silver 4500/30 RX Copay KP CO Silver 4500/30 RX Copay X KP Select CO Silver 4500/30 RX Copay X |
| Plan type | Deductible | HSA Qualified | Deductible |
| Annual medical deductible (individual/family) | \$5,000/\$10,000 | \$5,000/\$10,000 | \$4,500/\$9,000 |
| Annual out-of-pocket maximum (individual/family) | \$9,100/\$18,200 | \$8,550/\$17,100 | \$9,100/\$18,200 |
| Benefits | | | |
| Virtual care | | | |
| Chat, Email, E-visit, Phone, and Video visit | No charge | No charge | No charge |
| Preventive care | | | |
| Routine physical exam, mammograms, etc. | No charge | No charge | No charge |
| Outpatient services (per visit or procedure) | | | |
| Primary care office visit | \$25 Preferred Provider/\$45 Affiliated Provider [†] | No charge | \$30 Preferred Provider/\$50 Affiliated Provider [†] |
| Specialty care office visit | \$85 | \$80 | \$90 |
| Most X-rays | 40% after deductible | 40% after deductible | 40% after deductible |
| Most lab tests | 40% after deductible | 40% after deductible | 40% after deductible |
| MRI, CT, PET | 40% after deductible | 40% after deductible | 40% after deductible |
| Outpatient surgery | 30% after deductible Ambulatory Surgery Center/40% after deductible Outpatient Department of hospital | 40% after deductible | 30% after deductible Ambulatory Surgery Center/40% after deductible Outpatient Department of hospital |
| Mental health visit | \$25 | No charge | \$30 |
| Inpatient hospital care | | | |
| Room and board, surgery, anesthesia, X-rays, lab tests, medications, mental health care | 40% after deductible | 40% after deductible | 40% after deductible |
| Maternity | | | |
| Routine prenatal care visit, first postpartum visit | 40% after deductible | No charge | 40% after deductible |
| Delivery and inpatient well-baby care | 40% after deductible | 40% after deductible | 40% after deductible |
| Emergency and urgent care | | | |
| Emergency department visit | 40% after deductible | 40% after deductible | 40% after deductible |
| Urgent care visit | \$100 | \$80 | \$100 |
| Prescription drugs (up to a 30-day supply) | | | |
| Generic | \$15* | \$20* | \$20* |
| Preferred brand | \$100 | \$125* | \$100* |
| Non-preferred brand | 40% after deductible | \$300* | \$400* |
| Specialty | 40% after deductible | \$650* | \$700* |
| Whole health | | | |
| Healthy services | Mental Health Wellness Exam, Chiropractic and Acupuncture visits, gender affirming care, wellness coaching, fitness club discounts, health education classes. | Mental Health Wellness Exam, Chiropractic and Acupuncture visits, gender affirming care, wellness coaching, fitness club discounts, health education classes. | Mental Health Wellness Exam, Chiropractic and Acupuncture visits, gender affirming care, wellness coaching, fitness club discounts, health education classes. |

*Mail order: 90-day supply of qualified prescriptions for the cost of a 60-day supply.

[†] Affiliated Providers practice outside Kaiser Permanente medical offices. Visit kp.org/doctors for a list of participating providers.

After the first fill, maintenance drugs are required to be filled at a Kaiser Permanente medical office pharmacy, or through mail order.

This plan summary is intended to highlight only some of the most frequently asked questions about benefits and their copays, coinsurance, and deductibles. Please refer to the *Membership Agreement* for complete details on your plan or for specific limitations and exclusions. To request a copy of the *Membership Agreement*, please visit kp.org/plandocuments, call us at 1-800-632-9700, or contact your broker. For services subject to the deductible, you'll have to pay health care expenses out of pocket until you meet your deductible. Most deductibles, copays, and coinsurance contribute to the out-of-pocket maximum.

KP Offered through Kaiser Permanente

E Offered through the health benefit exchange,
Connect for Health Colorado

Financial assistance options are available for certain plans, and for Native Alaskans and American Indians on connectforhealthco.com.

| Benefit highlights | KP E | KP E | KP E |
|--|--|--|--|
| | KP CO Silver 3700/20%/HSA KP Select CO Silver 3700/20%/HSA KP CO Silver 3700/20%/HSA X KP Select CO Silver 3700/20%/HSA X | KP CO Silver 2200/25 KP Select CO Silver 2200/25 KP CO Silver 2200/25 X KP Select CO Silver 2200/25 X | KP CO Gold 2000/20 KP Select CO Gold 2000/20 |
| Plan type | Deductible | HSA Qualified | Deductible |
| Annual medical deductible (individual/family) | \$3,700/\$7,400 | \$2,200/\$4,400 | \$2,000/\$4,000 |
| Annual out-of-pocket maximum (individual/family) | \$7,000/\$14,000 | \$9,100/\$18,200 | \$8,500/\$17,000 |
| Benefits | | | |
| Virtual care | | | |
| Chat, Email, E-visit, Phone, and Video visit | No charge after deductible | No charge | No charge |
| Preventive care | | | |
| Routine physical exam, mammograms, etc. | No charge | No charge | No charge |
| Outpatient services (per visit or procedure) | | | |
| Primary care office visit | 20% after deductible Preferred Provider/ 40% after deductible Affiliated Provider† | \$25 Preferred Provider/ \$45 Affiliated Provider† | \$20 Preferred Provider/ \$40 Affiliated Provider† |
| Specialty care office visit | 20% after deductible | \$75 | \$60 |
| Most X-rays | 20% after deductible | 35% after deductible | 30% after deductible |
| Most lab tests | 20% after deductible | \$30 | 30% after deductible |
| MRI, CT, PET | 20% after deductible | \$750 | 30% after deductible |
| Outpatient surgery | 10% after deductible Ambulatory Surgery Center/20% after deductible Outpatient Department of hospital | 25% after deductible Ambulatory Surgery Center/35% after deductible Outpatient Department of hospital | 20% after deductible Ambulatory Surgery Center/30% after deductible Outpatient Department of hospital |
| Mental health visit | 20% after deductible | \$25 | \$20 |
| Inpatient hospital care | | | |
| Room and board, surgery, anesthesia, X-rays, lab tests, medications, mental health care | 20% after deductible | 35% after deductible | 30% after deductible |
| Maternity | | | |
| Routine prenatal care visit, first postpartum visit | 20% after deductible | 35% after deductible | 30% after deductible |
| Delivery and inpatient well-baby care | 20% after deductible | 35% after deductible | 30% after deductible |
| Emergency and urgent care | | | |
| Emergency department visit | 20% after deductible | 35% after deductible | 30% after deductible |
| Urgent care visit | 20% after deductible | \$100 | \$75 |
| Prescription drugs (up to a 30-day supply) | | | |
| Generic | \$15 after deductible* | \$20* | \$10* |
| Preferred brand | \$85 after deductible* | \$85 after \$1,000 pharmacy deductible* | \$40 after \$195 pharmacy deductible* |
| Non-preferred brand | 20% after deductible | 35% after \$1,000 pharmacy deductible | 30% after \$195 pharmacy deductible |
| Specialty | 20% after deductible | 35% after \$1,000 pharmacy deductible | 30% after \$195 pharmacy deductible |
| Whole health | | | |
| Healthy services | Mental Health Wellness Exam, Chiropractic and Acupuncture visits, gender affirming care, wellness coaching, fitness club discounts, health education classes. | Mental Health Wellness Exam, Chiropractic and Acupuncture visits, gender affirming care, wellness coaching, fitness club discounts, health education classes. | Mental Health Wellness Exam, Chiropractic and Acupuncture visits, gender affirming care, wellness coaching, fitness club discounts, health education classes. |

*Mail order: 90-day supply of qualified prescriptions for the cost of a 60-day supply.

† Affiliated Providers practice outside Kaiser Permanente medical offices. Visit kp.org/doctors for a list of participating providers.

After the first fill, maintenance drugs are required to be filled at a Kaiser Permanente medical office pharmacy, or through mail order.

This plan summary is intended to highlight only some of the most frequently asked questions about benefits and their copays, coinsurance, and deductibles. Please refer to the *Membership Agreement* for complete details on your plan or for specific limitations and exclusions. To request a copy of the *Membership Agreement*, please visit kp.org/plandocuments, call us at 1-800-632-9700, or contact your broker. For services subject to the deductible, you'll have to pay health care expenses out of pocket until you meet your deductible. Most deductibles, copays, and coinsurance contribute to the out-of-pocket maximum.

KP Offered through Kaiser Permanente

E Offered through the health benefit exchange, Connect for Health Colorado

Financial assistance options are available for certain plans, and for Native Alaskans and American Indians on connectforhealthco.com.

| Benefit highlights | KP E KP Colorado Option Gold KP Select Colorado Option Gold | KP E KP CO Gold 1500/20 KP Select CO Gold 1500/20 | KP E KP CO Gold 0/20 RX Copay KP Select CO Gold 0/20 RX Copay | KP E KP CO Catastrophic** KP Select CO Catastrophic** |
|---|---|---|---|---|
| | Deductible | Deductible | Copayment | Deductible |
| Plan type | | | | |
| Annual medical deductible (individual/family) | \$1,600/\$3,200 | \$1,500/\$3,000 | None/None | \$9,100/\$18,200 |
| Annual out-of-pocket maximum (individual/family) | \$7,800/\$15,600 | \$8,500/\$17,000 | \$8,500/\$17,000 | \$9,100/\$18,200 |
| Benefits | | | | |
| Virtual care | | | | |
| Chat, Email, E-visit, Phone, and Video visit | No charge | No charge | No charge | No charge after deductible |
| Preventive care | | | | |
| Routine physical exam, mammograms, etc. | No charge | No charge | No charge | No charge |
| Outpatient services (per visit or procedure) | | | | |
| Primary care office visit | No charge | \$20 Preferred Provider/ \$40 Affiliated Provider† | \$20 Preferred Provider/ \$40 Affiliated Provider† | First 3 office visits no charge; additional visits no charge after deductible |
| Specialty care office visit | \$50 | \$60 | \$55 | No charge after deductible |
| Most X-rays | 30% after deductible | 25% after deductible | 35% | No charge after deductible |
| Most lab tests | 30% after deductible | 25% after deductible | 35% | No charge after deductible |
| MRI, CT, PET | 30% after deductible | 25% after deductible | \$500 | No charge after deductible |
| Outpatient surgery | 30% after deductible | 15% after deductible Ambulatory Surgery Center/25% after deductible Outpatient Department of hospital | 25% Ambulatory Surgery Center/35% Outpatient Department of hospital | No charge after deductible |
| Mental health visit | No charge | \$20 | \$20 | No charge after deductible |
| Inpatient hospital care | | | | |
| Room and board, surgery, anesthesia, X-rays, lab tests, medications, mental health care | 30% after deductible | 25% after deductible | 35% | No charge after deductible |
| Maternity | | | | |
| Routine prenatal care visit, first postpartum visit | No charge | 25% after deductible | 35% | No charge after deductible |
| Delivery and inpatient well-baby care | 30% after deductible | 25% after deductible | 35% | No charge after deductible |
| Emergency and urgent care | | | | |
| Emergency department visit | 30% after deductible | 25% after deductible | \$750 | No charge after deductible |
| Urgent care visit | \$50 | \$75 | \$75 | No charge after deductible |
| Prescription drugs (up to a 30-day supply) | | | | |
| Generic | \$10* | \$10* | \$10* | No charge after deductible |
| Preferred brand | \$50* | \$40* | \$40* | No charge after deductible |
| Non-preferred brand | \$200* | 25% after \$195 pharmacy deductible | \$375* | No charge after deductible |
| Specialty | \$600* | 25% after \$195 pharmacy deductible | \$650* | No charge after deductible |
| Whole health | | | | |
| Healthy services | Mental Health Wellness Exam, Chiropractic and Acupuncture visits, gender affirming care, wellness coaching, fitness club discounts, health education classes. | Mental Health Wellness Exam, Chiropractic and Acupuncture visits, gender affirming care, wellness coaching, fitness club discounts, health education classes. | Mental Health Wellness Exam, Chiropractic and Acupuncture visits, gender affirming care, wellness coaching, fitness club discounts, health education classes. | Mental Health Wellness Exam, Chiropractic and Acupuncture visits, gender affirming care, wellness coaching, fitness club discounts, health education classes. |

*Mail order: 90-day supply of qualified prescriptions for the cost of a 60-day supply.

† Affiliated Providers practice outside Kaiser Permanente medical offices. Visit kp.org/doctors for a list of participating providers.

**Only applicants younger than age 30 or applicants age 30 and older who receive an exemption due to lack of affordable coverage or hardship may enroll in this plan. To apply for an exemption, please go to marketplace.cms.gov/applications-and-forms/hardship-exemption.pdf and follow the instructions.

After the first fill, maintenance drugs are required to be filled at a Kaiser Permanente medical office pharmacy, or through mail order.

This plan summary is intended to highlight only some of the most frequently asked questions about benefits and their copays, coinsurance, and deductibles. Please refer to the *Membership Agreement* for complete details on your plan or for specific limitations and exclusions. To request a copy of the *Membership Agreement*, please visit kp.org/plandocuments, call us at 1-800-632-9700, or contact your broker. For services subject to the deductible, you'll have to pay health care expenses out of pocket until you meet your deductible. Most deductibles, copays, and coinsurance contribute to the out-of-pocket maximum.

E Offered through the health benefit exchange, Connect for Health Colorado

Cost Share Reduction (CSR) Plans—You must qualify for and enroll in the CSR plans on this page through connectforhealthco.com.

| Benefit highlights | E | E | E |
|---|---|---|---|
| | KP CO Silver 3650/20/73% CSR KP Select CO Silver 3650/20/73% CSR | KP CO Silver 1000/20/87% CSR KP Select CO Silver 1000/20/87% CSR | KP CO Silver 75/10/94% CSR KP Select CO Silver 75/10/94% CSR |
| Plan type | Deductible | Deductible | Deductible |
| Annual medical deductible (individual/family) | \$3,650/\$7,300 | \$1,000/\$2,000 | \$75/\$150 |
| Annual out-of-pocket maximum (individual/family) | \$7,250/\$14,500 | \$2,850/\$5,700 | \$2,200/\$4,400 |
| Benefits | | | |
| Virtual care | | | |
| Chat, Email, E-visit, Phone, and Video visit | No charge | No charge | No charge |
| Preventive care | | | |
| Routine physical exam, mammograms, etc. | No charge | No charge | No charge |
| Outpatient services (per visit or procedure) | | | |
| Primary care office visit | \$20 Preferred Provider/\$40 Affiliated Provider [†] | \$20 Preferred Provider/\$40 Affiliated Provider [†] | \$10 Preferred Provider/\$15 Affiliated Provider [†] |
| Specialty care office visit | \$75 | \$45 | \$20 |
| Most X-rays | 35% after deductible | 25% after deductible | 10% after deductible |
| Most lab tests | 35% after deductible | 25% after deductible | 10% after deductible |
| MRI, CT, PET | 35% after deductible | 25% after deductible | 10% after deductible |
| Outpatient surgery | 25% after deductible Ambulatory Surgery Center/35% after deductible Outpatient Department of hospital | 15% after deductible Ambulatory Surgery Center/25% after deductible Outpatient Department of hospital | 10% after deductible |
| Mental health visit | \$20 | \$20 | \$10 |
| Inpatient hospital care | | | |
| Room and board, surgery, anesthesia, X-rays, lab tests, medications, mental health care | 35% after deductible | 25% after deductible | 10% after deductible |
| Maternity | | | |
| Routine prenatal care visit, first postpartum visit | 35% after deductible | 25% after deductible | 10% after deductible |
| Delivery and inpatient well-baby care | 35% after deductible | 25% after deductible | 10% after deductible |
| Emergency and urgent care | | | |
| Emergency department visit | 35% after deductible | 25% after deductible | 10% after deductible |
| Urgent care visit | \$100 | \$75 | \$50 |
| Prescription drugs (up to a 30-day supply) | | | |
| Generic | \$15* | \$15* | \$5* |
| Preferred brand | \$100 | \$50* | \$10* |
| Non-preferred brand | 35% after deductible | 25% | 10% |
| Specialty | 35% after deductible | 25% | 10% |
| Whole health | | | |
| Healthy services | Mental Health Wellness Exam, Chiropractic and Acupuncture visits, gender affirming care, wellness coaching, fitness club discounts, health education classes. | Mental Health Wellness Exam, Chiropractic and Acupuncture visits, gender affirming care, wellness coaching, fitness club discounts, health education classes. | Mental Health Wellness Exam, Chiropractic and Acupuncture visits, gender affirming care, wellness coaching, fitness club discounts, health education classes. |

*Mail order: 90-day supply of qualified prescriptions for the cost of a 60-day supply.

[†] Affiliated Providers practice outside Kaiser Permanente medical offices. Visit kp.org/doctors for a list of participating providers.

After the first fill, maintenance drugs are required to be filled at a Kaiser Permanente medical office pharmacy, or through mail order.

This plan summary is intended to highlight only some of the most frequently asked questions about benefits and their copays, coinsurance, and deductibles. Please refer to the *Membership Agreement* for complete details on your plan or for specific limitations and exclusions. To request a copy of the *Membership Agreement*, please visit kp.org/plandocuments, call us at 1-800-632-9700, or contact your broker. For services subject to the deductible, you'll have to pay health care expenses out of pocket until you meet your deductible. Most deductibles, copays, and coinsurance contribute to the out-of-pocket maximum.

E Offered through the health benefit exchange, Connect for Health Colorado

Cost Share Reduction (CSR) Plans—You must qualify for and enroll in the CSR plans on this page through connectforhealthco.com.

| Benefit highlights | E | E | E |
|---|---|---|---|
| | KP Colorado Option Silver 73% AV KP Select Colorado Option Silver 73% AV | KP Colorado Option Silver 87% AV KP Select Colorado Option Silver 87% AV | KP Colorado Option Silver 94% AV KP Select Colorado Option Silver 94% AV |
| Plan type | Deductible | Deductible | Deductible |
| Annual medical deductible (individual/family) | \$3,500/\$7,000 | \$800/\$1,600 | \$100/\$200 |
| Annual out-of-pocket maximum (individual/family) | \$7,250/\$14,500 | \$2,800/\$5,600 | \$1,000/\$2,000 |
| Benefits | | | |
| Virtual care | | | |
| Chat, Email, E-visit, Phone, and Video visit | No charge | No charge | No charge |
| Preventive care | | | |
| Routine physical exam, mammograms, etc. | No charge | No charge | No charge |
| Outpatient services (per visit or procedure) | | | |
| Primary care office visit | No charge | No charge | No charge |
| Specialty care office visit | \$80 | \$60 | \$40 |
| Most X-rays | 40% after deductible | 30% after deductible | 20% after deductible |
| Most lab tests | 40% after deductible | 30% after deductible | 20% after deductible |
| MRI, CT, PET | 40% after deductible | 30% after deductible | 20% after deductible |
| Outpatient surgery | 40% after deductible | 30% after deductible | 20% after deductible |
| Mental health visit | No charge | No charge | No charge |
| Inpatient hospital care | | | |
| Room and board, surgery, anesthesia, X-rays, lab tests, medications, mental health care | 40% after deductible | 30% after deductible | 20% after deductible |
| Maternity | | | |
| Routine prenatal care visit, first postpartum visit | No charge | No charge | No charge |
| Delivery and inpatient well-baby care | 40% after deductible | 30% after deductible | 20% after deductible |
| Emergency and urgent care | | | |
| Emergency department visit | 40% after deductible | 30% after deductible | 20% after deductible |
| Urgent care visit | \$80 | \$60 | \$40 |
| Prescription drugs (up to a 30-day supply) | | | |
| Generic | \$20* | No charge | No charge |
| Preferred brand | \$125* | \$60* | \$20* |
| Non-preferred brand | \$300* | \$120* | \$40* |
| Specialty | \$600* | \$180* | \$60* |
| Whole health | | | |
| Healthy services | Mental Health Wellness Exam, Chiropractic and Acupuncture visits, gender affirming care, wellness coaching, fitness club discounts, health education classes. | Mental Health Wellness Exam, Chiropractic and Acupuncture visits, gender affirming care, wellness coaching, fitness club discounts, health education classes. | Mental Health Wellness Exam, Chiropractic and Acupuncture visits, gender affirming care, wellness coaching, fitness club discounts, health education classes. |

*Mail order: 90-day supply of qualified prescriptions for the cost of a 60-day supply.

† Affiliated Providers practice outside Kaiser Permanente medical offices. Visit kp.org/doctors for a list of participating providers.

After the first fill, maintenance drugs are required to be filled at a Kaiser Permanente medical office pharmacy, or through mail order.

This plan summary is intended to highlight only some of the most frequently asked questions about benefits and their copays, coinsurance, and deductibles. Please refer to the *Membership Agreement* for complete details on your plan or for specific limitations and exclusions. To request a copy of the *Membership Agreement*, please visit kp.org/plandocuments, call us at 1-800-632-9700, or contact your broker. For services subject to the deductible, you'll have to pay health care expenses out of pocket until you meet your deductible. Most deductibles, copays, and coinsurance contribute to the out-of-pocket maximum.

E Offered through the health benefit exchange, Connect for Health Colorado

Cost Share Reduction (CSR) Plans—You must qualify for and enroll in the CSR plans on this page through connectforhealthco.com.

| Benefit highlights | E | E | E |
|---|---|---|---|
| | KP CO Silver 4000/30 RX Copay 73% CSR KP Select CO Silver 4000/30 RX Copay 73% CSR | KP CO Silver 500/20 RX Copay 87% CSR KP Select CO Silver 500/20 RX Copay 87% CSR | KP CO Silver 50/5 RX Copay 94% CSR KP Select CO Silver 50/5 RX Copay 94% CSR |
| Plan type | Deductible | Deductible | Deductible |
| Annual medical deductible (individual/family) | \$4,000/\$8,000 | \$500/\$1,000 | \$50/\$100 |
| Annual out-of-pocket maximum (individual/family) | \$7,250/\$14,500 | \$2,900/\$5,800 | \$2,900/\$5,800 |
| Benefits | | | |
| Virtual care | | | |
| Chat, Email, E-visit, Phone, and Video visit | No charge | No charge | No charge |
| Preventive care | | | |
| Routine physical exam, mammograms, etc. | No charge | No charge | No charge |
| Outpatient services (per visit or procedure) | | | |
| Primary care office visit | \$30 Preferred Provider/\$50 Affiliated Provider [†] | \$20 Preferred Provider/\$40 Affiliated Provider [†] | \$5 Preferred Provider/\$10 Affiliated Provider [†] |
| Specialty care office visit | \$80 | \$70 | \$10 |
| Most X-rays | 40% after deductible | 30% after deductible | 10% after deductible |
| Most lab tests | 40% after deductible | 30% after deductible | 10% after deductible |
| MRI, CT, PET | 40% after deductible | 30% after deductible | 10% after deductible |
| Outpatient surgery | 30% after deductible Ambulatory Surgery Center/40% after deductible Outpatient Department of hospital | 20% after deductible Ambulatory Surgery Center/30% after deductible Outpatient Department of hospital | 10% after deductible |
| Mental health visit | \$30 | \$20 | No charge |
| Inpatient hospital care | | | |
| Room and board, surgery, anesthesia, X-rays, lab tests, medications, mental health care | 40% after deductible | 30% after deductible | 10% after deductible |
| Maternity | | | |
| Routine prenatal care visit, first postpartum visit | 40% after deductible | 30% after deductible | 10% after deductible |
| Delivery and inpatient well-baby care | 40% after deductible | 30% after deductible | 10% after deductible |
| Emergency and urgent care | | | |
| Emergency department visit | 40% after deductible | 30% after deductible | 10% after deductible |
| Urgent care visit | \$100 | \$75 | \$50 |
| Prescription drugs (up to a 30-day supply) | | | |
| Generic | \$20* | \$15* | \$5* |
| Preferred brand | \$90* | \$80* | \$10* |
| Non-preferred brand | \$400* | \$200* | \$150* |
| Specialty | \$600* | \$400* | \$250* |
| Whole health | | | |
| Healthy services | Mental Health Wellness Exam, Chiropractic and Acupuncture visits, gender affirming care, wellness coaching, fitness club discounts, health education classes. | Mental Health Wellness Exam, Chiropractic and Acupuncture visits, gender affirming care, wellness coaching, fitness club discounts, health education classes. | Mental Health Wellness Exam, Chiropractic and Acupuncture visits, gender affirming care, wellness coaching, fitness club discounts, health education classes. |

*Mail order: 90-day supply of qualified prescriptions for the cost of a 60-day supply.

[†]Affiliated Providers practice outside Kaiser Permanente medical offices. Visit kp.org/doctors for a list of participating providers.

After the first fill, maintenance drugs are required to be filled at a Kaiser Permanente medical office pharmacy, or through mail order.

This plan summary is intended to highlight only some of the most frequently asked questions about benefits and their copays, coinsurance, and deductibles. Please refer to the *Membership Agreement* for complete details on your plan or for specific limitations and exclusions. To request a copy of the *Membership Agreement*, please visit kp.org/plandocuments, call us at 1-800-632-9700, or contact your broker. For services subject to the deductible, you'll have to pay health care expenses out of pocket until you meet your deductible. Most deductibles, copays, and coinsurance contribute to the out-of-pocket maximum.

E Offered through the health benefit exchange, Connect for Health Colorado

Cost Share Reduction (CSR) Plans—You must qualify for and enroll in the CSR plans on this page through connectforhealthco.com.

| Benefit highlights | E | E | E |
|--|--|--|--|
| | KP CO Silver 2500/20%/73% CSR KP Select CO Silver 2500/20%/73% CSR | KP CO Silver 850/10%/87% CSR KP Select CO Silver 850/10%/87% CSR | KP CO Silver 200/5%/94% CSR KP Select CO Silver 200/5%/94% CSR |
| Plan type | Deductible | Deductible | Deductible |
| Annual medical deductible (individual/family) | \$2,500/\$5,000 | \$850/\$1,700 | \$200/\$400 |
| Annual out-of-pocket maximum (individual/family) | \$6,950/\$13,900 | \$3,000/\$6,000 | \$2,600/\$5,200 |
| Benefits | | | |
| Virtual care | | | |
| Chat, Email, E-visit, Phone, and Video visit | No charge | No charge | No charge |
| Preventive care | | | |
| Routine physical exam, mammograms, etc. | No charge | No charge | No charge |
| Outpatient services (per visit or procedure) | | | |
| Primary care office visit | 20% after deductible Preferred Provider/ 40% after deductible Affiliated Provider† | 10% after deductible Preferred Provider/ 30% after deductible Affiliated Provider† | 5% after deductible Preferred Provider/ 10% after deductible Affiliated Provider† |
| Specialty care office visit | 20% after deductible | 10% after deductible | 5% after deductible |
| Most X-rays | 20% after deductible | 10% after deductible | 5% after deductible |
| Most lab tests | 20% after deductible | 10% after deductible | 5% after deductible |
| MRI, CT, PET | 20% after deductible | 10% after deductible | 5% after deductible |
| Outpatient surgery | 10% after deductible Ambulatory Surgery Center/20% after deductible Outpatient Department of hospital | 10% after deductible | 5% after deductible |
| Mental health visit | 20% after deductible | 10% after deductible | 5% after deductible |
| Inpatient hospital care | | | |
| Room and board, surgery, anesthesia, X-rays, lab tests, medications, mental health care | 20% after deductible | 10% after deductible | 5% after deductible |
| Maternity | | | |
| Routine prenatal care visit, first postpartum visit | 20% after deductible | 10% after deductible | 5% after deductible |
| Delivery and inpatient well-baby care | 20% after deductible | 10% after deductible | 5% after deductible |
| Emergency and urgent care | | | |
| Emergency department visit | 20% after deductible | 10% after deductible | 5% after deductible |
| Urgent care visit | 20% after deductible | 10% after deductible | 5% after deductible |
| Prescription drugs (up to a 30-day supply) | | | |
| Generic | \$10 after deductible* | \$10 after deductible* | \$5 after deductible* |
| Preferred brand | \$55 after deductible* | \$30 after deductible* | \$10 after deductible* |
| Non-preferred brand | 20% after deductible | 10% after deductible | 5% after deductible |
| Specialty | 20% after deductible | 10% after deductible | 5% after deductible |
| Whole health | | | |
| Healthy services | Mental Health Wellness Exam, Chiropractic and Acupuncture visits, gender affirming care, wellness coaching, fitness club discounts, health education classes. | Mental Health Wellness Exam, Chiropractic and Acupuncture visits, gender affirming care, wellness coaching, fitness club discounts, health education classes. | Mental Health Wellness Exam, Chiropractic and Acupuncture visits, gender affirming care, wellness coaching, fitness club discounts, health education classes. |

*Mail order: 90-day supply of qualified prescriptions for the cost of a 60-day supply.

† Affiliated Providers practice outside Kaiser Permanente medical offices. Visit kp.org/doctors for a list of participating providers.

After the first fill, maintenance drugs are required to be filled at a Kaiser Permanente medical office pharmacy, or through mail order.

This plan summary is intended to highlight only some of the most frequently asked questions about benefits and their copays, coinsurance, and deductibles. Please refer to the *Membership Agreement* for complete details on your plan or for specific limitations and exclusions. To request a copy of the *Membership Agreement*, please visit kp.org/plandocuments, call us at 1-800-632-9700, or contact your broker. For services subject to the deductible, you'll have to pay health care expenses out of pocket until you meet your deductible. Most deductibles, copays, and coinsurance contribute to the out-of-pocket maximum.

E Offered through the health benefit exchange, Connect for Health Colorado

Cost Share Reduction (CSR) Plans—You must qualify for and enroll in the CSR plans on this page through connectforhealthco.com.

| Benefit highlights | E | E | E |
|---|---|---|---|
| | KP CO Silver 2200/25/73% CSR KP Select CO Silver 2200/25/73% CSR | KP CO Silver 275/25/87% CSR KP Select CO Silver 275/25/87% CSR | KP CO Silver 50/5/94% CSR KP Select CO Silver 50/5/94% CSR |
| Plan type | Deductible | Deductible | Deductible |
| Annual medical deductible (individual/family) | \$2,200/\$4,400 | \$275/\$550 | \$50/\$100 |
| Annual out-of-pocket maximum (individual/family) | \$7,250/\$14,500 | \$2,850/\$5,700 | \$2,000/\$4,000 |
| Benefits | | | |
| Virtual care | | | |
| Chat, Email, E-visit, Phone, and Video visit | No charge | No charge | No charge |
| Preventive care | | | |
| Routine physical exam, mammograms, etc. | No charge | No charge | No charge |
| Outpatient services (per visit or procedure) | | | |
| Primary care office visit | \$25 Preferred Provider/\$45 Affiliated Provider [†] | \$25 Preferred Provider/\$45 Affiliated Provider [†] | \$5 Preferred Provider/\$10 Affiliated Provider [†] |
| Specialty care office visit | \$75 | \$45 | \$10 |
| Most X-rays | 35% after deductible | 30% after deductible | 10% after deductible |
| Most lab tests | \$30 | \$10 | \$5 |
| MRI, CT, PET | \$750 | \$200 | \$25 |
| Outpatient surgery | 25% after deductible Ambulatory Surgery Center/35% after deductible Outpatient Department of hospital | 20% after deductible Ambulatory Surgery Center/30% after deductible Outpatient Department of hospital | 10% after deductible |
| Mental health visit | \$25 | \$25 | \$5 |
| Inpatient hospital care | | | |
| Room and board, surgery, anesthesia, X-rays, lab tests, medications, mental health care | 35% after deductible | 30% after deductible | 10% after deductible |
| Maternity | | | |
| Routine prenatal care visit, first postpartum visit | 35% after deductible | 30% after deductible | 10% after deductible |
| Delivery and inpatient well-baby care | 35% after deductible | 30% after deductible | 10% after deductible |
| Emergency and urgent care | | | |
| Emergency department visit | 35% after deductible | 30% after deductible | 10% after deductible |
| Urgent care visit | \$100 | \$75 | \$50 |
| Prescription drugs (up to a 30-day supply) | | | |
| Generic | \$20* | \$15* | \$5* |
| Preferred brand | \$85 after \$875 pharmacy deductible* | \$70* | \$10* |
| Non-preferred brand | 35% after \$875 pharmacy deductible | 30% | 10% |
| Specialty | 35% after \$875 pharmacy deductible | 30% | 10% |
| Whole health | | | |
| Healthy services | Mental Health Wellness Exam, Chiropractic and Acupuncture visits, gender affirming care, wellness coaching, fitness club discounts, health education classes. | Mental Health Wellness Exam, Chiropractic and Acupuncture visits, gender affirming care, wellness coaching, fitness club discounts, health education classes. | Mental Health Wellness Exam, Chiropractic and Acupuncture visits, gender affirming care, wellness coaching, fitness club discounts, health education classes. |

*Mail order: 90-day supply of qualified prescriptions for the cost of a 60-day supply.

[†]Affiliated Providers practice outside Kaiser Permanente medical offices. Visit kp.org/doctors for a list of participating providers.

After the first fill, maintenance drugs are required to be filled at a Kaiser Permanente medical office pharmacy, or through mail order.

This plan summary is intended to highlight only some of the most frequently asked questions about benefits and their copays, coinsurance, and deductibles. Please refer to the *Membership Agreement* for complete details on your plan or for specific limitations and exclusions. To request a copy of the *Membership Agreement*, please visit kp.org/plandocuments, call us at 1-800-632-9700, or contact your broker. For services subject to the deductible, you'll have to pay health care expenses out of pocket until you meet your deductible. Most deductibles, copays, and coinsurance contribute to the out-of-pocket maximum.

Pediatric dental care

Kaiser Permanente health plans at the Bronze, Silver, and Gold levels provide essential health benefits, including pediatric dental benefits for children 18 and younger.

A reason to smile

Pediatric dental benefits are provided by Delta Dental of Colorado, one of the nation's largest and most experienced dental providers. Delta Dental provides members with the convenience of local customer service and a statewide network of more than 2,500 Delta Dental PPO™ providers.

Important to note

Children must see a Delta Dental PPO dentist for care. Services provided by dentists outside of the PPO network are not covered.

Kaiser Permanente individual and family health plans do not include dental benefits for adults 19 and older. If you want adult dental benefits, you may purchase separate adult dental benefits from Connect for Health Colorado or another health insurance carrier. The Kaiser Permanente Catastrophic plan does not include pediatric dental benefits.

Finding a dentist

Delta Dental makes it easy to get dental benefits for children covered on your Kaiser Permanente plan.

- **Website:** Visit deltadentalco.com and use the Find a Dentist search tool. Search by city, state, or ZIP code for a listing in your area. Make sure the dentist information says "This provider participates in: Delta Dental PPO."
- **Email:** Contact us at customer_service@ddpco.com
- **Mobile app:** With Delta Dental's free mobile app for Android and iOS, you can search for dentists, download an ID card, and look at benefits coverage and claims.
- **Phone:** Call Delta Dental of Colorado at **1-800-610-0201**. You can speak with a customer service agent Monday through Friday, 7:30 a.m. to 5 p.m., or get automated assistance 24/7.

Benefits

Dental benefits are for covered children up through the month they turn 19. Coverage is listed under the child's name.

| Features | |
|---|--------------------------------|
| Deductible* | \$50 (applies to all services) |
| Annual maximum | None |
| Covered services | |
| Diagnostic & preventive services | |
| Oral exams & cleanings, limited to 2 per calendar year | 100% after deductible is met* |
| Fluoride treatments, limited to 2 per calendar year | |
| Sealants, 1 per tooth per year | |
| Bitewing X-rays, 1 set per calendar year | |
| Intraoral X-rays, 2 per calendar year | |
| Panoramic or full-mouth X-rays, once every 60 months | |
| Space maintainers, 1 per lifetime per primary tooth | |
| Palliative treatment, 1 per calendar year | |
| Basic services (limited to 2 basic procedures per year) | |
| Fillings | 50% after deductible is met* |
| Oral surgery | |
| Endodontics | |
| Major services (limited to 1 major procedure per year) | |
| Crowns | 50% after deductible is met* |

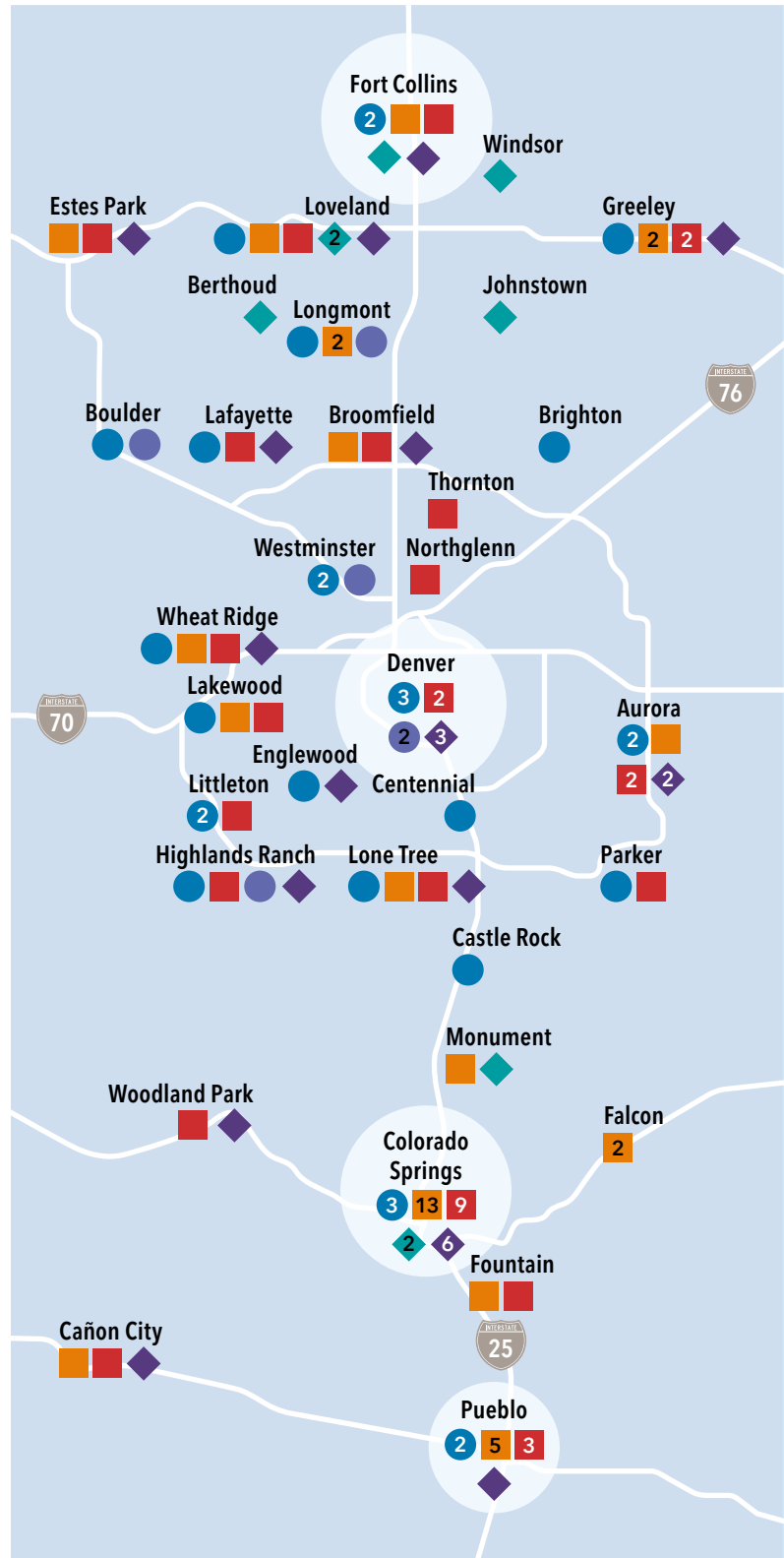
*Dental deductible does not apply to Native Americans or Native Alaskans.

In-person care locations

Colorado medical facilities

| | | |
|-----------|--|---|
| 30 | Kaiser Permanente medical offices | ● |
| 35 | Urgent care facilities | ■ |
| 35 | Emergency care facilities | ■ |
| 6 | Behavioral health offices | ● |
| 9 | Affiliated providers with extended hours | ◆ |
| 24 | Affiliated hospital/inpatient care | ◆ |

There are **1,100+** Kaiser Permanente physicians, and **12,300** affiliated plan providers at locations across Colorado.* For the most up-to-date list of providers included in your plan, visit kp.org/locations.



*Choice of providers varies by plan, service area, and availability at the time of selection and is subject to change. Provider and location information is current at the time of publication and is subject to change. In an emergency, call **911** or go to the nearest emergency department.

Kaiser Permanente Medical Offices

Central

Aurora

Aurora Centrepoint
14701 E. Exposition Ave.
Aurora, CO 80012

Smoky Hill
16290 E. Quincy Ave.
Aurora, CO 80015

Boulder

Baseline
580 Mohawk Drive
Boulder, CO 80303

Brighton

Brighton
859 S. 4th Ave.
Brighton, CO 80601

Castle Rock

Castle Rock
4318 Trail Boss Drive
Castle Rock, CO 80104

Centennial

Arapahoe
5555 E. Arapahoe Road
Centennial, CO 80122

Denver

East Denver
10400 E. Alameda Ave.
Denver, CO 80247

Franklin
2045 Franklin St.
Denver, CO 80205

Midtown Med. Office Building
1960 N. Ogden St.
Denver, CO 80218

Skyline
1375 E. 20th Ave.
Denver, CO 80205

Englewood

Englewood
2955 S. Broadway
Englewood, CO 80113

Highlands Ranch

Highlands Ranch
9285 Hepburn St.
Highlands Ranch, CO 80129

Lafayette

Rock Creek
280 Exempla Circle
Lafayette, CO 80026

Lakewood

Lakewood
8383 W. Alameda Ave.
Lakewood, CO 80226

Littleton

Ken Caryl
7600 Shaffer Parkway
Littleton, CO 80127

Southwest
5257 S. Wadsworth Blvd.
Littleton, CO 80123

Lone Tree

Lone Tree
10240 Park Meadows Drive
Lone Tree, CO 80124

Longmont

Longmont
2345 Bent Way
Longmont, CO 80503

Parker

Parker
10168 Parkglenn Way
Parker, CO 80138

Westminster

Hidden Lake
7701 Sheridan Blvd.
Westminster, CO 80003

Westminster
11245 Huron St.
Westminster, CO 80234

Wheat Ridge

Wheat Ridge
4803 Ward Road
Wheat Ridge, CO 80033

Northern

Fort Collins

Fort Collins
2950 E. Harmony Road, Suite 190
Fort Collins, CO 80528

Spring Creek
1136 E. Stuart St.
Building 3, Suite 200
Fort Collins, CO 80525

Greeley

Greeley
2429 35th Ave.
Greeley, CO 80634

Loveland

Loveland
4901 Thompson Parkway
Loveland, CO 80534

Southern

Colorado Springs

Briargate
4105 Briargate Parkway, Suite 125
Colorado Springs, CO 80920

Parkside
215 Parkside Drive
Colorado Springs, CO 80910

Premier
3920 North Union Blvd.
Colorado Springs, CO 80907

Pueblo

Acero
2625 W. Pueblo Blvd.
Pueblo, CO 81004

Pueblo North
3670 Parker Blvd., Suite 200
Pueblo, CO 81008

Urgent Care

If you have an urgent care need, call us for advice. We can help you determine what type of care is most appropriate or help you schedule an appointment. Most locations have extended hours. Call **303-338-4545** or **1-800-218-1059** (TTY **711**) for the latest hours of operation.

Central

Aurora

Aurora Centrepont Medical Offices
14701 E. Exposition Ave.
Aurora, CO 80012

Lakewood

Lakewood Medical Offices
8383 W. Alameda Ave.
Lakewood, CO 80226

Lone Tree

Lone Tree Medical Offices
10240 Park Meadows Drive
Lone Tree, CO 80124

Longmont

NextCare Urgent Care
2144 Main St., Suite 8
Longmont, CO 80501
303-772-0041

UCHealth Urgent Care – Main Street
2101 Main St.
Longmont, CO 80501
720-745-8030

Pediatric care (only) available at the following facilities

Children's Hospital Colorado North Campus, Broomfield
469 W. State Highway 7
Broomfield, CO 80023
720-777-1340

Children's Hospital Colorado, Wheat Ridge
3455 N. Lutheran Parkway, Suite 230
Wheat Ridge, CO 80033
720-777-1370

Urgent Care at Home

DispatchHealth delivers high-quality health care to your home. Available 7 days a week, from 8 a.m.-10 p.m., **1-833-358-2739** (TTY **711**).

Northern

Estes Park

Estes Park Urgent Care Center
420 Steamer Dr
Estes Park, CO 80517
970-577-4500

Fort Collins

Banner Urgent Care
3617 S. College Ave., Suite C
Fort Collins, CO 80525
970-821-1500

Greeley

Banner Urgent Care
2015 35th Ave.
Greeley, CO 80634
970-810-4155

NextCare Urgent Care
1011 39th Ave., Suite A
Greeley, CO 80634
970-351-8181

Loveland

Banner Health Clinic – Skyline Urgent Care
2555 E. 13th St., Suite 110
Loveland, CO 80537
970-820-4264

Southern

Cañon City

Centura Health Urgent Care
3245 East US Highway 50, Unit E
Canon City, CO 81212
719-285-2888

Colorado Springs

Alliance Urgent Care ●
9320 Grand Cordera Parkway
Suite 100
Colorado Springs, CO 80924
719-282-6337

Centura Health Penrose Community Urgent Care
3027 N. Circle Drive
Colorado Springs, CO 80909
719-776-3216

Centura Health Urgent Care Broadmoor
1263 Lake Plaza Drive, Suite 120
Colorado Springs, CO 80906
719-776-3330

Centura Health Urgent Care Powers Pointe
5607 Barnes Road, Suite 140
Colorado Springs, CO 80917
719-776-3851

Concentra Urgent Care ●
2322 S. Academy Blvd.
Colorado Springs, CO 80916
719-390-1727

Concentra Urgent Care ●
4083 Austin Bluffs Parkway
Colorado Springs, CO 80918
719-594-0046

Concentra Urgent Care ●
402 W. Bijou St.
Colorado Springs, CO 80905
719-302-6942

Concentra Urgent Care ●
5320 Mark Dabbling Blvd.
Building 7, Suite 100
Colorado Springs, CO 80918
719-592-1584

Concentra Urgent Care ●
6011 E. Woodmen Road, Suite 100
Colorado Springs, CO 80923
719-571-8888

UCHealth Urgent Care ●
1035 Garden of the Gods Road
Suite 120
Colorado Springs, CO 80907
719-365-3200

UCHealth Urgent Care ●
4323 Integrity Center Point
Colorado Springs, CO 80917
719-591-2558

UCHealth Urgent Care ●
2767 Janitell Road
Colorado Springs, CO 80906
719-365-2888

UCHealth Urgent Care ●
13445 Voyager Parkway
Colorado Springs, CO 80921
719-365-3200

Urgent Care at Home

DispatchHealth delivers high-quality health care to your home. Available 7 days a week, from 8 a.m.-10 p.m., **1-833-358-2739** (TTY **711**).

Falcon

Falcon Urgent Care
7475 McLaughlin Road
Falcon, CO 80831
719-495-9994

UCHealth Urgent Care ●
11605 Meridian Market View, Suite 184
Falcon, CO 80831
719-364-9560

Fountain

Centura Health Urgent Care Fountain
7955 Fountain Mesa Road
Fountain, CO 80817
719-776-3737

Monument

Centura Health Urgent Care – Tri Lakes
17230 Jackson Creek Parkway
Suite 120
Monument, CO 80132
719-571-7070

Pueblo

Concentra Urgent Care ●
4117 N. Elizabeth St.
Pueblo, CO 81008
719-545-0788

Concentra Urgent Care ●
4112 Outlook Blvd., Suite 325
Pueblo, CO 81008
719-562-6300

Southern Colorado Clinic, PC
3676 Parker Blvd.
Pueblo, CO 81008
719-553-2208

Southern Colorado Clinic, PC
3937 Ivywood Lane
Pueblo, CO 81005
719-553-0111

Southern Colorado Clinic, PC
109 S Burlington Dr.
Pueblo West, CO 81007
719-553-2205

Emergency Care

If you think you are experiencing an emergency medical condition, call **911**, or if time and safety permit, go to the nearest emergency room. Your care will be covered. For a complete definition of an emergency medical condition, please refer to your Evidence of Coverage, Membership Agreement, or Certificate of Insurance.

Central

Aurora

HealthONE The Medical Center of Aurora South Campus
1501 S. Potomac St.
Aurora, CO 80012
303-695-2600

Denver

Intermountain Healthcare (SCL Health) Saint Joseph Hospital ●
1375 E. 19th Ave.
Denver, CO 80218
303-812-2000

Englewood

HealthONE Swedish Medical Center
501 E. Hampden Ave.
Englewood, CO 80113
303-788-6555

Lafayette

Intermountain Healthcare (SCL Health) Good Samaritan Medical Center
200 Exempla Circle
Lafayette, CO 80026
303-689-4000

Lakewood

HealthONE Swedish Belmar ER
260 S. Wadsworth Blvd.
Lakewood, CO 80226
720-417-7200

Littleton

HealthONE Swedish Southwest ER
6196 S. Ammons Way
Littleton, CO 80123
303-788-6911

Lone Tree

HealthONE Sky Ridge Medical Center
10101 RidgeGate Parkway
Lone Tree, CO 80124
720-225-5362

Northglenn

Intermountain Healthcare (SCL Health) Saint Joseph Emergency Northglenn ●
11900 Grant St.
Northglenn, CO 80233
720-573-5095

Parker

HealthONE Sky Ridge South Parker ER
12223 Pine Bluffs Way
Parker, CO 80134
720-347-6100

Thornton

HealthONE North Suburban Northeast ER
12793 Holly St.
Thornton, CO 80241
303-280-6640

Wheat Ridge

Intermountain Healthcare (SCL Health) Lutheran Medical Center
8300 W. 38th Ave.
Wheat Ridge, CO 80033
303-425-4500

Pediatric care (only) available at the following facilities

Children’s Hospital Colorado Anschutz Medical Campus ●
13123 E. 16th Ave.
Aurora, CO 80045
720-777-1234

Children’s Hospital Colorado North Campus ●
469 W. State Highway 7
Broomfield, CO 80023
720-777-1340

Children’s Hospital Colorado South Campus ●
1811 Plaza Dr
Highlands Ranch, CO 80129
720-478-1234

Rocky Mountain Hospital for Children ●
2001 N. High St.
Denver, CO 80205
720-754-1000

● In-network for members on KP Select plans.

Northern

Estes Park

Estes Park Medical Center
555 Prospect Ave.
Estes Park, CO 80517
970-586-2317

Fort Collins

Banner Fort Collins Medical Center
4700 Lady Moon Drive
Fort Collins, CO 80528
970-821-4000

Greeley

Banner North Colorado Emergency Care
2000 70th Ave.
Greeley, CO 80634
970-810-2636

Banner North Colorado Medical Center
1801 16th St.
Greeley, CO 80631
970-810-4121

Loveland

Banner McKee Medical Center
2000 N. Boise Ave.
Loveland, CO 80538
970-820-4640

Southern

Cañon City

Centura Health St. Thomas More Hospital
1338 Phay Ave.
Cañon City, CO 81212
719-285-2000

Colorado Springs

Centura Health Penrose Hospital ●
2222 N. Nevada Ave.
Colorado Springs, CO 80907
719-776-5000

Centura Health St. Francis Medical Center ●
6001 E. Woodmen Road
Colorado Springs, 80923
719-571-1000

UCHealth ER ●
3790 E. Woodmen Road
Colorado Springs, CO 80920
719-264-5080

UCHealth Memorial Hospital Central ●
1400 E. Boulder St.
Colorado Springs, CO 80909
719-365-5000

UCHealth Memorial Hospital North ●
4050 Briargate Parkway
Colorado Springs, CO 80920
719-364-5000

UCHealth ER ●
13510 Meadowgrass Drive
Colorado Springs, CO 80921
719-487-2060

UCHealth ER ●
2770 N. Powers Blvd.
Colorado Springs, CO 80922
719-638-3000

UCHealth Grandview Hospital ●
5623 Pulpit Peak View
Colorado Springs, CO 80918
719-272-3600

Fountain

UCHealth ER ●
7890 Fountain Mesa Road
Fountain, CO 80817
719-390-2680

Pueblo

Centura Health St. Mary-Corwin Medical Center
1008 Minnequa Ave.
Pueblo, CO 81004
1-800-228-4039

Parkview Medical Center
400 W. 16th St.
Pueblo, CO 81003
719-584-4000

Parkview – Pueblo West Emergency Services
899 E. Industrial Blvd.
Pueblo West, CO 81007
719-288-2100

Woodland Park

UCHealth Pikes Peak Regional Hospital ●
16420 W. U.S. Highway 24
Woodland Park, CO 80863
719-374-6060

Pediatric care (only) available at the following facilities

Children's Hospital Colorado, Colorado Springs
4090 Briargate Parkway
Colorado Springs, CO 80920
719-305-1234

Extended Hours

from affiliated providers

Northern

Berthoud

Banner Health Clinic – Berthoud
401 10th St.
Berthoud, CO 80513
970-532-4910

Fort Collins

Banner Health Clinic – Family Practice
702A W. Drake Road
Fort Collins, CO 80526
970-821-4600

Johnstown

Banner Health Clinic – Family Practice
222 Johnstown Center Drive
Johnstown, CO 80534
970-587-4974

Loveland

Banner Health Clinic – Southwest Loveland
1230 14th St. SW
Loveland, CO 80537
970-820-3999

Banner Health Clinic – Columbine
2701 Madison Square Drive
Loveland, CO 80538
970-820-5000

Windsor

Banner Health Clinic – Windsor
1300 Main St.
Windsor, CO 80550
970-686-5646

Southern

Colorado Springs

Optum Medical Group ●
1633 Medical Center Point
Colorado Springs, CO 80907
719-632-5109

Optum Medical Group ●
600 S. 21st St.
Colorado Springs, CO 80904
719-522-1133

Monument

Optum Medical Group ●
15909 Jackson Creek Parkway
Monument, CO 80132
719-522-1133

● In-network for members on KP Select plans.

● Behavioral Health

Visit kp.org/getcare for more information about all your mental health care options. You can schedule appointments at kp.org/appointments or by calling the appropriate number for the area where you live.

Central

Call **303-471-7700 (TTY 711)**, Monday–Friday, 8:30 a.m.–5 p.m.

Boulder

Baseline Behavioral Health

580 Mohawk Drive
Boulder, CO 80303

Denver

Highline Behavioral Health

10350 E. Dakota Ave.
Denver, CO 80247
Entrance located on east side of building

Skyline Medical Offices

1275 E. 20th Ave.
Denver, CO 80205
Addiction Medicine services only

Highlands Ranch

Ridgeline Behavioral Health
9139 S. Ridgeline Blvd.
Highlands Ranch, CO 80129

Longmont

Longmont Medical Offices

2345 Bent Way
Longmont, CO 80503

Westminster

Hidden Lake Behavioral Health

7701 Sheridan Blvd.
Westminster, CO 80003

Northern

Call **1-866-359-8299 (TTY 711)**, Monday–Friday, 8:30 a.m.–5 p.m.

Southern

Call **1-866-702-9026 (TTY 1-866-835-2755)**, anytime day or night.

◆ Inpatient Hospital Care

If you require a scheduled hospitalization, your doctor will most likely refer you to one of the following in-plan hospitals. For questions about your hospital admission copayment, deductible, or coinsurance, please review your Evidence of Coverage, Membership Agreement, or Certificate of Insurance.

Central

Aurora

Children’s Hospital Colorado ●
Anschutz Medical Campus
HealthONE The Medical Center of Aurora

Broomfield

Children’s Hospital Colorado ●
North Campus

Denver

HealthONE Presbyterian/ St. Luke’s Medical Center ●
Intermountain Healthcare (SCL Health) Saint Joseph Hospital ●
Rocky Mountain Hospital for Children

Englewood

HealthONE Swedish Medical Center

Highlands Ranch

Children’s Hospital Colorado South Campus

Lafayette

Intermountain Healthcare (SCL Health) Good Samaritan Medical Center ●

Lone Tree

HealthONE Sky Ridge Medical Center

Wheat Ridge

Intermountain Healthcare (SCL Health) Lutheran Medical Center ●

Northern

Estes Park

Estes Park Medical Center

Fort Collins

Banner Fort Collins Medical Center

Greeley

Banner North Colorado Medical Center

Loveland

Banner McKee Medical Center

Southern

Cañon City

Centura Health St. Thomas More Hospital

Colorado Springs

Centura Health Penrose Hospital ●
Centura Health St. Francis Medical Center ●
Children’s Hospital Colorado, Colorado Springs ●
UCHealth Grandview Hospital ●
UCHealth Memorial Hospital Central ●
UCHealth Memorial Hospital North ●
Pueblo
Parkview Medical Center
Woodland Park
UCHealth Pikes Peak Regional Hospital ●



For the latest information on all of our facilities, including hours and department listings, visit kp.org/locations.

● In-network for members on KP Select plans.

1. Kaiser Permanente improved blood pressure control in our Black/African-American members with hypertension, raised colorectal cancer screening rates in our Hispanic/Latino members, and improved blood sugar control in our members with diabetes. Self-reported race and ethnicity data are captured in KP HealthConnect, and HEDIS® measures are updated quarterly in the interregional CORE Datamart. **2.** When appropriate and available. If you travel out of state, phone appointments and video visits may not be available due to state laws that may prevent doctors from providing care across state lines. Laws differ by state. **3.** High deductible health plans may require a copay or coinsurance for phone appointments and video visits. **4.** Available on most prescription orders; additional fees may apply. For more information, contact the pharmacy. **5.** Same-day and next-day prescription delivery services may be available for an additional fee. These services are not covered under your health plan benefits and may be limited to specific prescription drugs, pharmacies, and areas. Order cutoff times and delivery days may vary by pharmacy location. Kaiser Permanente is not responsible for delivery delays by mail carriers. Kaiser Permanente may discontinue same-day and next-day prescription delivery services at any time without notice and other restrictions may apply. Medi-Cal and Medicaid beneficiaries should ask their pharmacy for more information about prescriptions. **6.** These features are available when you get care from Kaiser Permanente facilities. To use the Kaiser Permanente app, you must be a Kaiser Permanente member registered on kp.org. **7.** Kaiser Permanente 2021 HEDIS® scores. Benchmarks provided by the National Committee for Quality Assurance (NCQA) Quality Compass® and represent all lines of business. Kaiser Permanente combined region scores were provided by the Kaiser Permanente Department of Care and Service Quality. The source for data contained in this publication is Quality Compass 2021 and is used with the permission of NCQA. Quality Compass 2021 includes certain CAHPS data. Any data display, analysis, interpretation, or conclusion based on these data is solely that of the authors, and NCQA specifically disclaims responsibility for any such display, analysis, interpretation, or conclusion. Quality Compass® and HEDIS® are registered trademarks of NCQA. CAHPS® is a registered trademark of the Agency for Healthcare Research and Quality. **8.** Some of these services may not be covered under your health plan benefits or subject to the terms set forth in your *Evidence of Coverage* or other plan documents. Services that aren't health plan benefits may be discontinued at any time without notice. **9.** Kaiser Permanente Telehealth Insights Dashboard. **10.** For a complete list of services you can use your HSA to pay for, see Publication 502, Medical and Dental Expenses, at irs.gov. **11.** Available in select ZIP codes. **12.** Affiliated providers practice outside Kaiser Permanente medical offices. Visit kp.org/findadoctor for a list of participating providers. Primary care visits with an affiliated provider may have a higher copay and coinsurance than visits with a Kaiser Permanente primary care provider. **13.** If you think you are experiencing an emergency medical condition, call 911, or if time and safety permit, go to the nearest emergency room. Your care will be covered. For a complete definition of an emergency medical condition, please refer to your *Evidence of Coverage, Membership Agreement, or Certificate of Insurance* at kp.org/eoc. **14.** Chat with a doctor or mental health specialist, video, and phone services are offered at no additional cost for most health plans. For these services, some PPO or high deductible health plans are subject to a copayment, coinsurance or deductible first before being provided at no additional cost. Review your *Evidence of Coverage, Membership Agreement, or Certificate of Insurance*, or call Member Services at **303-338-3800** or **1-800-632-9700 (TTY 711)**, Monday through Friday, from 8 a.m. to 6 p.m., for your plan. details. **15.** The Ginger coaching services described above are not covered under your health plan benefits, are not a Medicare-covered benefit, and are not subject to the terms set forth in your *Evidence of Coverage* or other plan documents. These services may be discontinued at any time without notice. The coaching services are not available to any members under 18 years old. The coaching services are not available to anyone enrolled in the State of Colorado's Fee-for-Service Medicaid program and receiving primary care medical provider services from Kaiser Permanente.

NONDISCRIMINATION NOTICE

Kaiser Foundation Health Plan of Colorado (Kaiser Health Plan) complies with applicable Federal civil rights laws and does not discriminate on the basis of race, color, national origin, age, disability, or sex. Kaiser Health Plan does not exclude people or treat them differently because of race, color, national origin, age, disability, or sex. We also:

- Provide no-cost aids and services to people with disabilities to communicate effectively with us, such as:
 - Qualified sign language interpreters
 - Written information in other formats, such as large print, audio, and accessible electronic formats
- Provide no-cost language services to people whose primary language is not English, such as:
 - Qualified interpreters
 - Information written in other languages

If you need these services, call **1-800-632-9700** (TTY **711**).

If you believe that Kaiser Health Plan has failed to provide these services or discriminated in another way on the basis of race, color, national origin, age, disability, or sex, you can file a grievance by mail at: Customer Experience Department, Attn: Kaiser Permanente Civil Rights Coordinator, 10350 E. Dakota Ave, Denver, CO 80247, or by phone at Member Services **1-800-632-9700** (TTY **711**).

You can also file a civil rights complaint with the U.S. Department of Health and Human Services, Office for Civil Rights electronically through the Office for Civil Rights Complaint Portal, available at <https://ocrportal.hhs.gov/ocr/portal/lobby.jsf>, or by mail or phone at: U.S. Department of Health and Human Services, 200 Independence Avenue SW., Room 509F, HHH Building, Washington, DC 20201, **1-800-368-1019**, (TTY **1-800-537-7697**). Complaint forms are available at hhs.gov/ocr/office/file/index.html.

HELP IN YOUR LANGUAGE

ATTENTION: If you speak English, language assistance services, free of charge, are available to you. Call **1-800-632-9700** (TTY **711**).

አማርኛ (Amharic) ማስታወሻ: የሚናገሩት ቋንቋ አማርኛ ከሆነ የትርጉም እርዳታ ድርጅቶች፣ በነጻ ሊያግዝዎት ተዘጋጅተዋል። ወደ ሚከተለው ቁጥር ይደውሉ **1-800-632-9700** (TTY **711**)።

العربية (Arabic) ملحوظة: إذا كنت تتحدث العربية، فإن خدمات المساعدة اللغوية تتوافر لك بالمجان. اتصل برقم **1-800-632-9700** (TTY **711**) .

Bàsòò Wùdù (Bassa) Dè dɛ nià kɛ dyédé gbo: ɔ jũ ké m̀ Bàsòò-wùdù-po-nyò jũ ní, níí, à wuɖu kà kò dò po-poò béìn m̀ gbo kpáa. Ɖá **1-800-632-9700** (TTY **711**)

中文 (Chinese) 注意: 如果您使用繁體中文，您可以免費獲得語言援助服務。請致電 **1-800-632-9700** (TTY **711**) 。

فارسی (Farsi) توجه: اگر به زبان فارسی گفتگو می کنید، تسهیلات زبانی بصورت رایگان برای شما فراهم می باشد. با **1-800-632-9700** (TTY **711**) تماس بگیرید.

Français (French) ATTENTION: Si vous parlez français, des services d'aide linguistique vous sont proposés gratuitement. Appelez le **1-800-632-9700** (TTY **711**).

Deutsch (German) ACHTUNG: Wenn Sie Deutsch sprechen, stehen Ihnen kostenlos sprachliche Hilfsdienstleistungen zur Verfügung.
Rufnummer: **1-800-632-9700** (TTY **711**).

Igbo (Igbo) NRUBAMA: Ọ bụrụ na ị na asụ Igbo, ọrụ enyemaka asụsụ, n'efu, dijiri gi. Kpọ **1-800-632-9700** (TTY **711**).

日本語 (Japanese) 注意事項: 日本語を話される場合、無料の言語支援をご利用いただけます。 **1-800-632-9700** (TTY **711**) まで、お電話にてご連絡ください。

한국어 (Korean) 주의: 한국어를 사용하시는 경우, 언어 지원 서비스를 무료로 이용하실 수 있습니다. **1-800-632-9700** (TTY **711**) 번으로 전화해 주십시오.

Naabeehó (Navajo) Díí baa akó nínízin: Díí saad bee yáníti'go Diné Bizaad, saad bee áká'ánída'áwo'déé', t'áá jiik'eh, éi ná hóló, koji' hódílnih **1-800-632-9700** (TTY **711**).

नेपाली (Nepali) ध्यान दिनुहोस्: तपाईंले नेपाली बोल्नुहुन्छ भने तपाईंको निम्ति भाषा सहायता सेवाहरू निःशुल्क रूपमा उपलब्ध छ । **1-800-632-9700** (TTY: **711**) फोन गर्नुहोस् ।

Afaan Oromoo (Oromo) XIYYEEFFANNAA: Afaan dubbattu Oroomiffa, tajaajila gargaarsa afaanii, kanfaltiidhaan ala, ni argama. Bilbilaa **1-800-632-9700** (TTY **711**).

Русский (Russian) ВНИМАНИЕ: если вы говорите на русском языке, то вам доступны бесплатные услуги перевода. Звоните **1-800-632-9700** (TTY **711**).

Español (Spanish) ATENCIÓN: si habla español, tiene a su disposición servicios gratuitos de asistencia lingüística. Llame al **1-800-632-9700** (TTY **711**).

Tagalog (Tagalog) PAUNAWA: Kung nagsasalita ka ng Tagalog, maaari kang gumamit ng mga serbisyo ng tulong sa wika nang walang bayad.
Tumawag sa **1-800-632-9700** (TTY **711**).

Tiếng Việt (Vietnamese) CHÚ Ý: Nếu bạn nói Tiếng Việt, có các dịch vụ hỗ trợ ngôn ngữ miễn phí dành cho bạn. Gọi số **1-800-632-9700** (TTY **711**).

Yorùbá (Yoruba) AKIYESI: Ti o ba nso ede Yoruba ofe ni iranlowo lori ede wa fun yin o. E pe ero ibanisoro yi **1-800-632-9700** (TTY **711**).

Let us help you find your healthy place

Having a good health plan is important for peace of mind. So is getting quality care. With Kaiser Permanente, you get both.

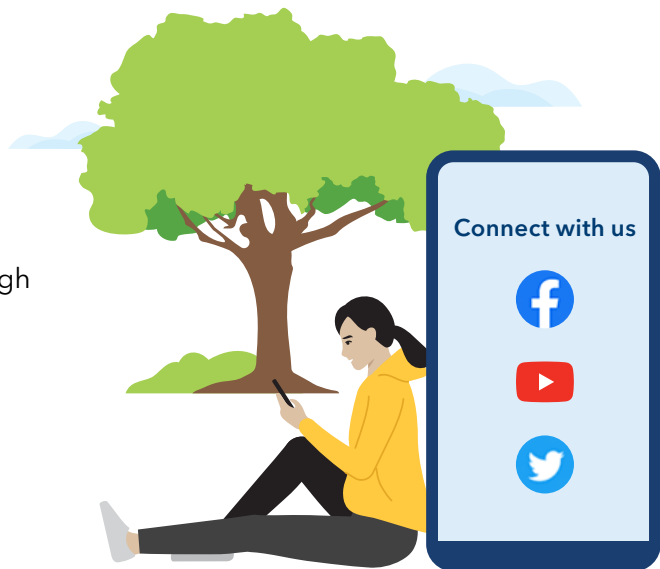
Want to learn more?

Talk to an enrollment specialist today about specialty care, extra features, and more.

Call **1-800-494-5314** (TTY 711).

Visit kp.org/myhealthyplace to see how we can make your care experience better, no matter what stage of life you're in.

Current members with questions can call our Member Service Contact Center at **1-800-632-9700** (TTY 711), Monday through Friday, 8 a.m. to 6 p.m. Mountain time.



Colorado state law requires that an Access Plan be available that describes Kaiser Foundation Health Plan of Colorado's network of provider Services. To obtain a copy, please call Member Services or visit kp.org.

All plans are offered and underwritten by Kaiser Foundation Health Plan of Colorado, 10350 E. Dakota Ave., Denver, CO 80247.